



## ATG4C Antibody

E11-15286C

**Catalog Number:** E11-15286 C

**Concentration:** 1mg/ml

**Swiss-Prot No.:** Q96DT6

**Other Names:** APG4 autophagy 4 homolog C; APG4-C; APG4C; AUT-like 3 cysteine endopeptidase; AUTL1; AUTL3; autophagin-3; autophagy-related cysteine endopeptidase; autophagy-related cysteine endopeptidase 3; autophagy-related protein 4 homolog C; cysteine protease ATG4C; EC 3.4.22.-

**Storage/Stability:** Store at -20°C/1 year

**Form of Antibody:** Rabbit IgG in phosphate buffered saline (without Mg<sup>2+</sup> and Ca<sup>2+</sup>), pH 7.4, 150mM NaCl, 0.02% sodium azide and 50% glycerol.

**Immunogen:** The antiserum was produced against synthesized peptide derived from internal of human

ATG4C.

**Purification:** The antibody was affinity-purified from rabbit antiserum by affinity-chromatography using epitope-specific immunogen.

**Specificity:** ATG4C antibody detects endogenous levels of total ATG4C protein.

**Reactivity:** Human, Mouse

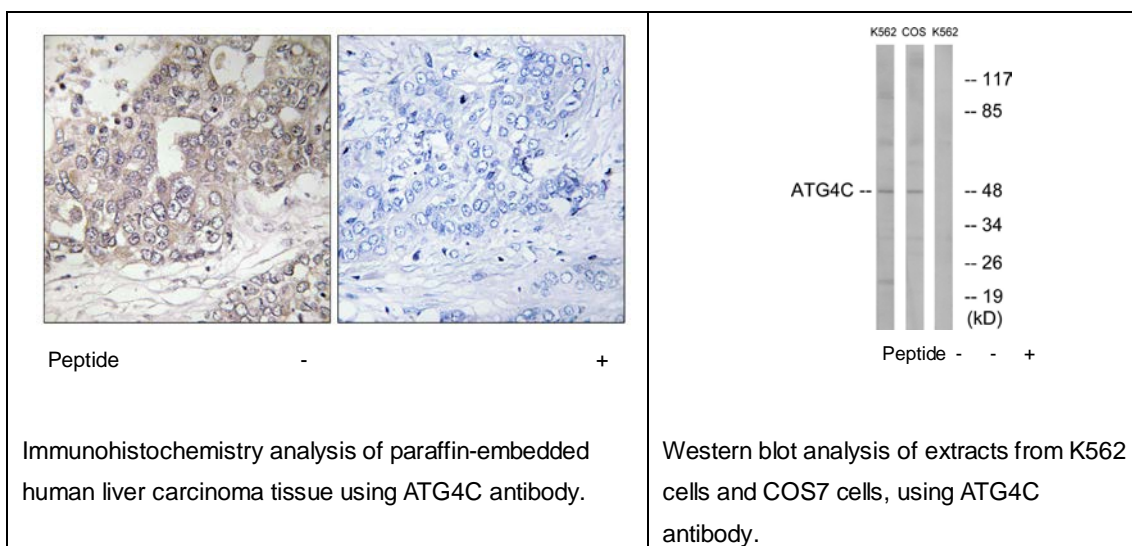
**Applications:** WB: 1:500~1:1000 IHC: 1:50~1:100  
IF: 1:100~1:500 ELISA: 1:20000

**References:**

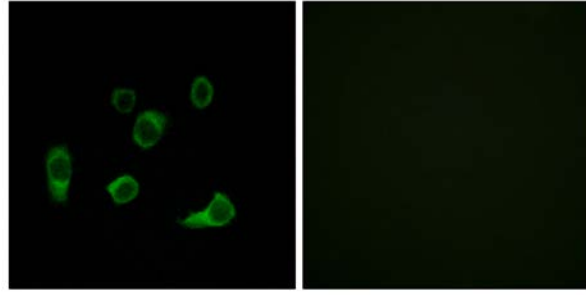
Marino G., J. Biol. Chem. 278:3671-3678(2003).

Chen J.M., Submitted (JUL-2001) to the EMBL/GenBank/DDBJ databases.

Ota T., Nat. Genet. 36:40-45(2004).



**For Research Use Only**



Peptide

-

+

Immunofluorescence analysis of HuvEc cells, using  
ATG4C antibody.