



C1S Antibody

E11-15211C

Catalog Number: E11-15211 C

Concentration: 1mg/ml

Swiss-Prot No.: P09871

Other Names: 28S ribosomal protein S7, mitochondrial; S7mt; MRP-S7; bMRP27a; bMRP-27a

Storage/Stability: Store at -20°C/1 year

Form of Antibody: Rabbit IgG in phosphate buffered saline (without Mg²⁺ and Ca²⁺), pH 7.4, 150mM NaCl, 0.02% sodium azide and 50% glycerol.

Immunogen: The antiserum was produced against synthesized peptide derived from internal of human C1S.

Purification: The antibody was affinity-purified from

rabbit antiserum by affinity-chromatography using epitope-specific immunogen.

Specificity: C1S antibody detects endogenous levels of total C1S protein.

Reactivity: Human (Identities = 100%, Positives = 100%)

Applications: WB: 1:500~1:1000 IHC: 1:50~1:100

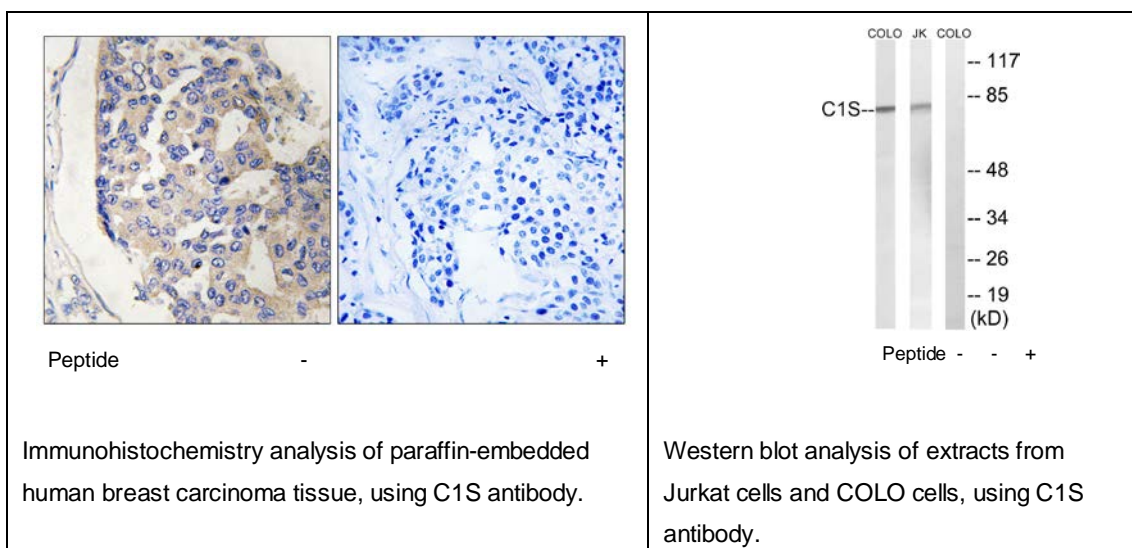
ELISA: 1:40000

References:

McKinnon C.M., Eur. J. Biochem. 169:547-553(1987).

Tosi M., Biochemistry 26:8516-8524(1987).

Kusumoto H., Proc. Natl. Acad. Sci. U.S.A. 85:7307-7311(1988).



For Research Use Only