



## CHSS2 Antibody

E11-15099C

**Catalog Number:** E11-15099C

**Concentration:** 1mg/ml

**Swiss-Prot No.:** Q8IZ52

**Other Names:** CHSS2; DKFZP434E0423; EC 2.4.1.175;  
EC 2.4.1.226

**Storage/Stability:** Store at -20°C/1 year

**Form of Antibody:** Rabbit IgG in phosphate buffered saline (without Mg<sup>2+</sup> and Ca<sup>2+</sup>), pH 7.4, 150mM NaCl, 0.02% sodium azide and 50% glycerol.

**Immunogen:** The antiserum was produced against synthesized peptide derived from internal of human CHSS2.

**Purification:** The antibody was affinity-purified from rabbit antiserum by affinity-chromatography using epitope-specific immunogen.

**Specificity:** CHSS2 antibody detects endogenous levels of total CHSS2 protein.

**Reactivity:** Human, Mouse, Rat

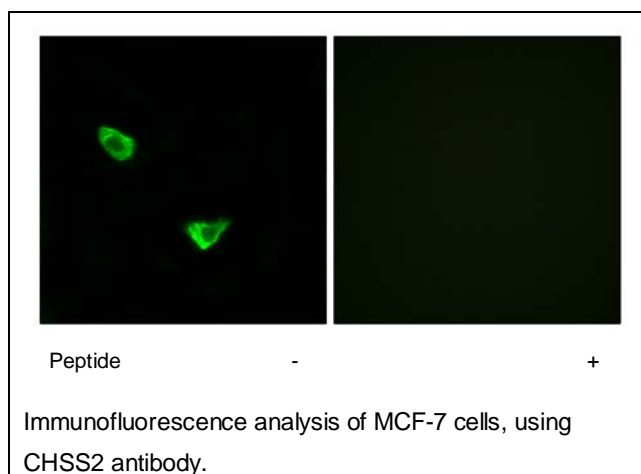
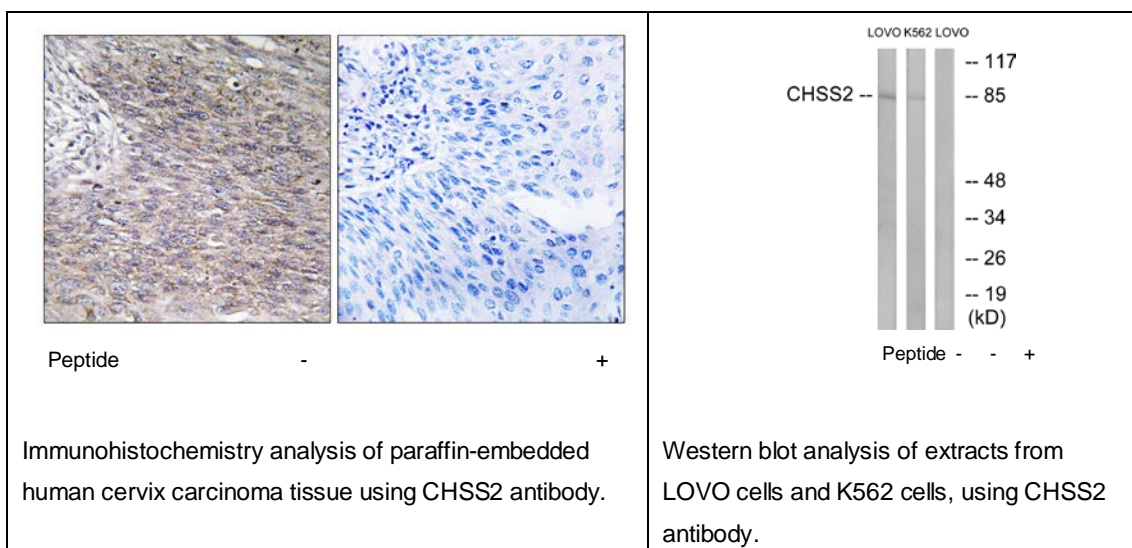
**Applications:** WB: 1:500~1:1000 IHC: 1:50~1:100  
IF: 1:100~1:500 ELISA: 1:40000

**References:**

Kitagawa H., J. Biol. Chem. 278:23666-23671(2003).

Yada T., J. Biol. Chem. 278:30235-30247(2003).

Clark H.F., Genome Res. 13:2265-2270(2003).



**For Research Use Only**

**For Research Use Only**