



## ATP5G3 Antibody

E11-14599C

**Catalog Number:** E11-14599 C

**Concentration:** 1mg/ml

**Swiss-Prot No.:** P48201

**Other Names:** ATP synthase lipid-binding protein, mitochondrial; ATP synthase proteolipid P3; ATPase protein 9; ATPase subunit c

**Storage/Stability:** Store at -20°C/1 year

**Form of Antibody:** Rabbit IgG in phosphate buffered saline (without Mg<sup>2+</sup> and Ca<sup>2+</sup>), pH 7.4, 150mM NaCl, 0.02% sodium azide and 50% glycerol.

**Immunogen:** The antiserum was produced against synthesized peptide derived from internal of human ATP5G3.

**Purification:** The antibody was affinity-purified from

rabbit antiserum by affinity-chromatography using epitope-specific immunogen.

**Specificity:** ATP5G3 antibody detects endogenous levels of total ATP5G3 protein.

**Reactivity:** Human (Identities = 100%, Positives = 100%);  
Rat (Identities = 100%, Positives = 100%)

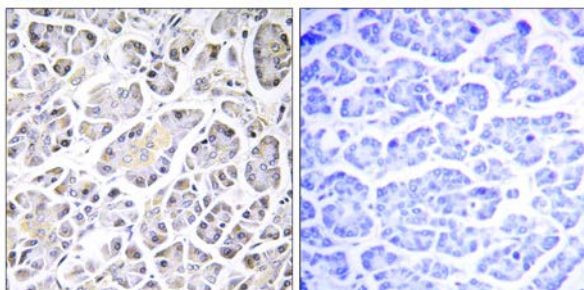
**Applications:** IHC: 1:50~1:100 IF: 1:100~1:500  
ELISA: 1:40000

**References:**

Yan W.L., Genomics 24:375-377(1994).

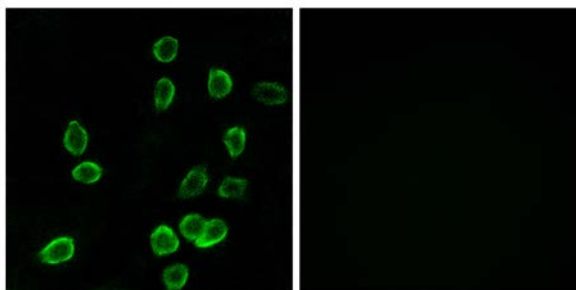
L., Du H., Nature 434:724-731(2005).

The MGC Project Team; Genome Res. 14:2121-2127(2004).



Peptide - +

Immunohistochemistry analysis of paraffin-embedded human pancreas tissue using ATP5G3 antibody.



Peptide - +

Immunofluorescence analysis of A549 cells, using ATP5G3 antibody.

**For Research Use Only**