



## p50 CDC37 Antibody

E11-12169C

**Catalog Number:** E11-12169 C

**Concentration:** 1mg/ml

**Swiss-Prot No.:** Q16543

**Other Names:** CC37, Hsp90 chaperone protein kinase-targeting subunit, Hsp90 co-chaperone Cdc37, p50Cdc37

**Storage/Stability:** Store at -20°C/1 year

**Form of Antibody:** Rabbit IgG in phosphate buffered saline (without Mg<sup>2+</sup> and Ca<sup>2+</sup>), pH 7.4, 150mM NaCl, 0.02% sodium azide and 50% glycerol.

**Immunogen:** The antiserum was produced against synthesized peptide derived from internal of human p50

CDC37.

**Purification:** The antibody was affinity-purified from rabbit antiserum by affinity-chromatography using epitope-specific immunogen.

**Specificity:** p50 CDC37 antibody detects endogenous levels of total p50 CDC37 protein.

**Reactivity:** Human, Mouse, Rat

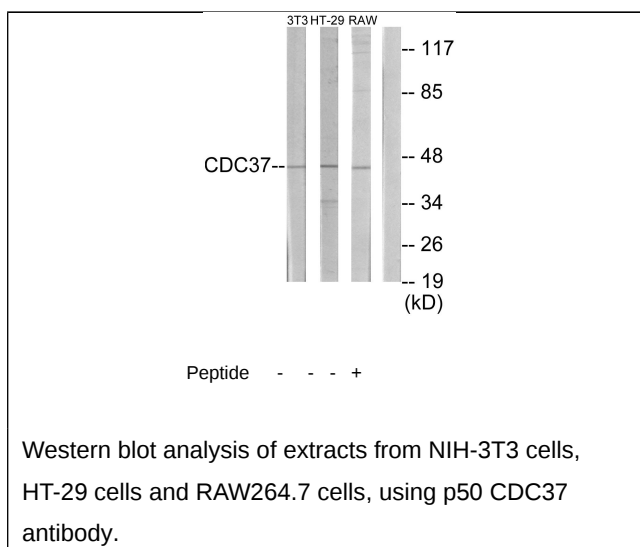
**Applications:** WB: 1:500~1:1000 ELISA: 1:20000

**References:**

Stepanova L., Genes Dev. 10:1491-1502(1996).

Dai K., J. Biol. Chem. 271:22030-22034(1996).

Lamphere L., Oncogene 14:1999-2004(1997).



**For Research Use Only**