



## STON1 Antibody

E11-11991C

**Catalog Number:** E11-11991 C

**Concentration:** 1mg/ml

**Swiss-Prot No.:** Q9Y6Q2

**Other Names:** SBLF, STN1; stoned

B/TFIIA-alpha/beta-like factor, STON1, stoned B-like factor, stonin-1

**Storage/Stability:** Store at -20°C/1 year

**Form of Antibody:** Rabbit IgG in phosphate buffered saline (without Mg<sup>2+</sup> and Ca<sup>2+</sup>), pH 7.4, 150mM NaCl, 0.02% sodium azide and 50% glycerol.

**Immunogen:** The antiserum was produced against synthesized peptide derived from C-terminal of human

STON1.

**Purification:** The antibody was affinity-purified from rabbit antiserum by affinity-chromatography using epitope-specific immunogen.

**Specificity:** STON1 antibody detects endogenous levels of total STON1 protein.

**Reactivity:** Human

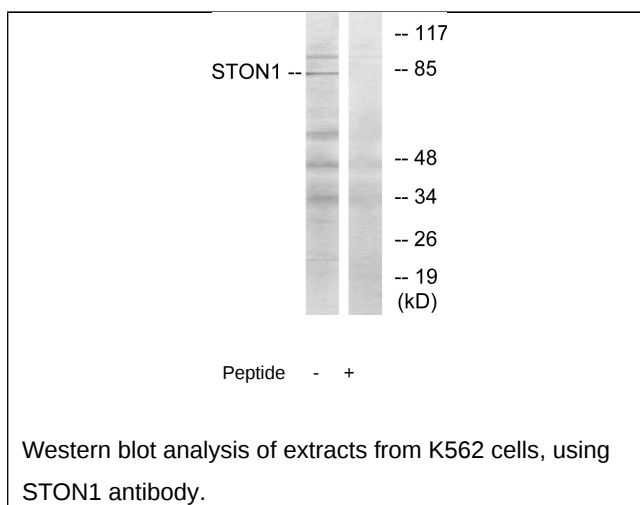
**Applications:** WB: 1:500~1:1000 ELISA: 1:10000

**References:**

Martina J.A., J. Cell Biol. 153:1111-1120(2001).

Han S., Biol. Reprod. 64:507-517(2001).

Upadhyaya A.B., J. Biol. Chem. 274:18040-18048(1999).



**For Research Use Only**