



## S6K- $\alpha$ 2 Antibody

E11-11074C

**Catalog Number:** E11-11074 C

**Concentration:** 1mg/ml

**Swiss-Prot No.:** Q15349

**Other Names:** 90 kDa ribosomal protein S6 kinase 2, EC 2.7.11.1, KS6A2, RPS6KA2, RSK-3, Ribosomal S6 kinase 3, Ribosomal protein S6 kinase alpha 2, S6K-alpha 2, kinase RSK3, p90-RSK 2, pp90RSK3

**Storage/Stability:** Store at -20°C/1 year

**Form of Antibody:** Rabbit IgG in phosphate buffered saline (without Mg<sup>2+</sup> and Ca<sup>2+</sup>), pH 7.4, 150mM NaCl, 0.02% sodium azide and 50% glycerol.

**Immunogen:** The antiserum was produced against synthesized peptide derived from internal of human

S6K- $\alpha$ 2.

**Purification:** The antibody was affinity-purified from rabbit antiserum by affinity-chromatography using epitope-specific immunogen.

**Specificity:** S6K- $\alpha$ 2 antibody detects endogenous levels of total S6K- $\alpha$ 2 protein.

**Reactivity:** Human (Identities = 100%, Positives = 100%);  
Mouse (Identities = 100%, Positives = 100%)

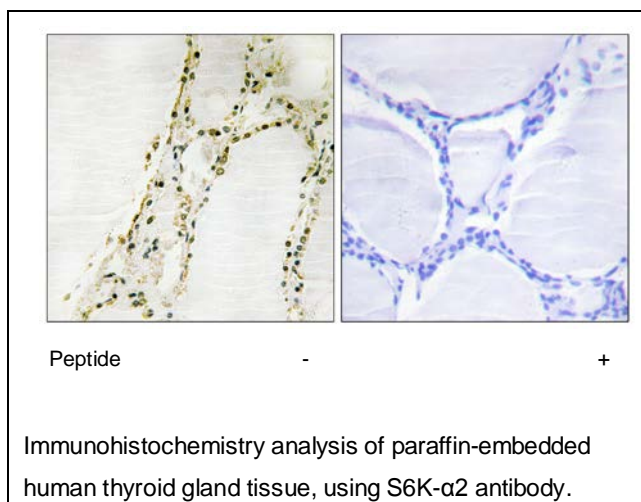
**Applications:** IHC: 1:50~1:100    ELISA: 1:1000

**References:**

Zhao Y., Mol. Cell. Biol. 15:4353-4363(1995).

Mungall A.J., Nature 425:805-811(2003).

Denis N.J., Proteomics 7:868-874(2007).



**For Research Use Only**