



IREB1 (Phospho-Ser711) Antibody

E11-1075A

Catalog Number: E11-1075A

Concentration: 1mg/ml

Swiss-Prot No.: P21399

Other Names: ACO1, Aconitate hydratase, EC 4.2.1.3, Ferritin repressor protein, IRE-BP 1, IRE1, IREBP1, IRP1, aconitase, citrate hydro-lyase, iron regulatory protein 1, iron-responsive element binding protein 1

All Sites: Human: Ser711; Mouse: Ser711; Rat: Ser711

Storage/Stability: Store at -20°C/1 year

Form of Antibody: Rabbit IgG in phosphate buffered saline (without Mg²⁺ and Ca²⁺), pH 7.4, 150mM NaCl, 0.02% sodium azide and 50% glycerol.

Immunogen: The antiserum was produced against synthesized phosphopeptide derived from human IREB1 around the phosphorylation site of serine 711 (Y-G-S^P-R-R).

Purification: The antibody was affinity-purified from

rabbit antiserum by affinity-chromatography using epitope-specific phosphopeptide. The antibody against non-phosphopeptide was removed by chromatography using non-phosphopeptide corresponding to the phosphorylation site.

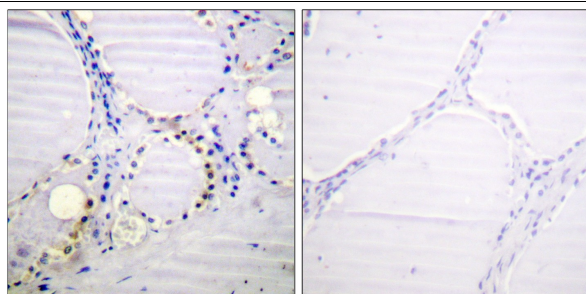
Specificity: IREB1 (Phospho-Ser711) antibody detects endogenous levels of IREB1 only when phosphorylated at serine 711.

Reactivity: Human, Mouse, Rat

Applications: WB: 1:500~1:1000 IHC: 1:50~1:100
ELISA: 1:10000

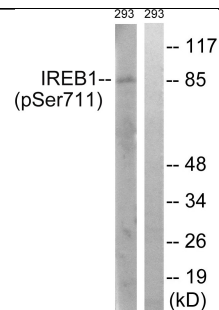
References:

- Hirling H., Nucleic Acids Res. 20:33-39(1992).
- Rouault T.A., Proc. Natl. Acad. Sci. U.S.A. 87:7958-7962(1990).
- Hentze M.W., Nucleic Acids Res. 19:1739-1740(1991).



P-peptide - +

Immunohistochemistry analysis of paraffin-embedded human thyroid gland tissue using IREB1 (Phospho-Ser711) antibody.



insulin + +
P-peptide - +

Western blot analysis of extracts from 293 cells, treated with insulin (0.01U/ml, 30mins), using IREB1 (Phospho-Ser711) antibody.