



CLK2 Antibody

E11-10652C

Catalog Number: E11-10652C

Concentration: 1mg/ml

Swiss-Prot No.: P49760

Other Names: CDC-like kinase 2, EC 2.7.12.1, kinase CLK2

Storage/Stability: Store at -20°C/1 year

Form of Antibody: Rabbit IgG in phosphate buffered saline (without Mg²⁺ and Ca²⁺), pH 7.4, 150mM NaCl, 0.02% sodium azide and 50% glycerol.

Immunogen: The antiserum was produced against synthesized peptide derived from internal of human CLK2.

Purification: The antibody was affinity-purified from rabbit antiserum by affinity-chromatography using epitope-specific immunogen.

Specificity: CLK2 antibody detects endogenous levels of total CLK2 protein.

Reactivity: Human, Mouse, Rat

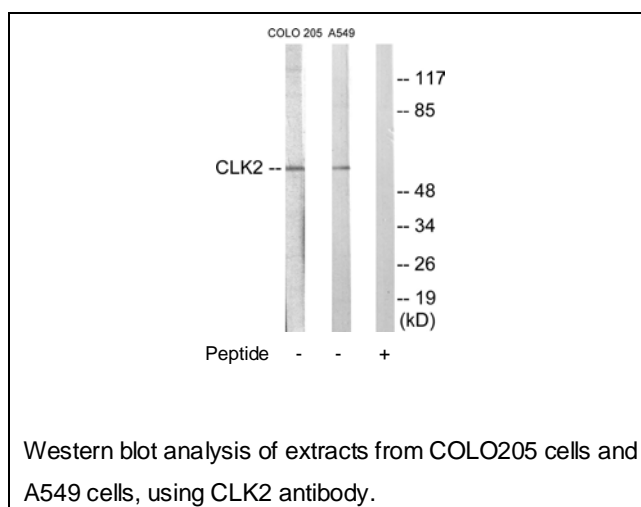
Applications: WB: 1:500~1:1000 ELISA: 1:20000

References:

Hanes J.J., J. Mol. Biol. 244:665-672(1994).

Winfield S.L., Genome Res. 7:1020-1026(1997).

Lee K., J. Biol. Chem. 271:27299-27303(1996).



For Research Use Only