



## ZIC1/2/3 Antibody

E11-10137C

**Catalog Number:** E11-10137C

**Concentration:** 1mg/ml

**Swiss-Prot No.:** Q15915

**Other Names:** Zinc finger protein ZIC 1, Zinc finger protein of the cerebellum 1, ZIC1

**Storage/Stability:** Store at -20°C/1 year

**Form of Antibody:** Rabbit IgG in phosphate buffered saline (without Mg<sup>2+</sup> and Ca<sup>2+</sup>), pH 7.4, 150mM NaCl, 0.02% sodium azide and 50% glycerol.

**Immunogen:** The antiserum was produced against synthesized peptide derived from internal of human

ZIC1/2/3.

**Purification:** The antibody was affinity-purified from rabbit antiserum by affinity-chromatography using epitope-specific immunogen.

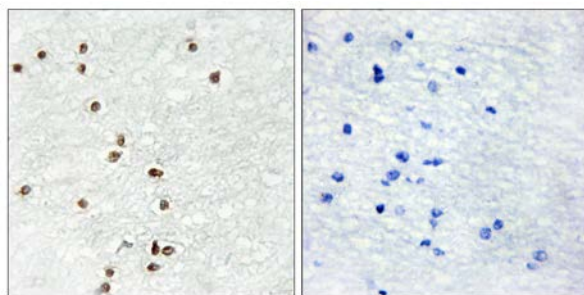
**Specificity:** ZIC1/2/3 antibody detects endogenous levels of total ZIC1/2/3 protein.

**Reactivity:** Human, Mouse

**Applications:** WB: 1:500~1:1000 IHC: 1:50~1:100  
ELISA: 1:20000

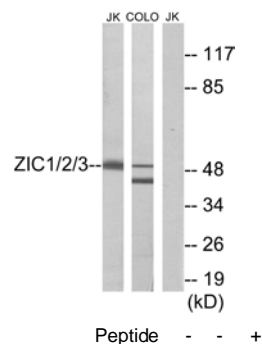
**References:**

Yokota N., Cancer Res. 56:377-383(1996).



Peptide - +

Immunohistochemistry analysis of paraffin-embedded human brain tissue using ZIC1/2/3 antibody.



Western blot analysis of extracts from Jurkat cells and COLO cells, using ZIC1/2/3 antibody.

**For Research Use Only**