



## Smad3 (Ab-213) Antibody

E11-1007B

**Catalog Number:** E11-1007B

**Concentration:** 1mg/ml

**Swiss-Prot No.:** P84022

**Other Names:** JV15-2, MAD-3, MADH3, Mad3, Mothers against DPP homolog 3, Mothers against decapentaplegic homolog 3, SMAD 3, Smad 3

**Storage/Stability:** Store at -20°C/1 year

**Form of Antibody:** Rabbit IgG in phosphate buffered saline (without Mg<sup>2+</sup> and Ca<sup>2+</sup>), pH 7.4, 150mM NaCl, 0.02% sodium azide and 50% glycerol.

**Immunogen:** The antiserum was produced against synthesized non-phosphopeptide derived from human Smad3 around the phosphorylation site of s serine 213 (P-M-S<sup>P</sup>-P-A).

**Purification:** The antibody was affinity-purified from rabbit antiserum by affinity-chromatography using epitope-specific immunogen.

**Specificity:** Smad3 (Ab-213) antibody detects endogenous levels of total Smad3 protein.

**Reactivity:** Human, Mouse, Rat

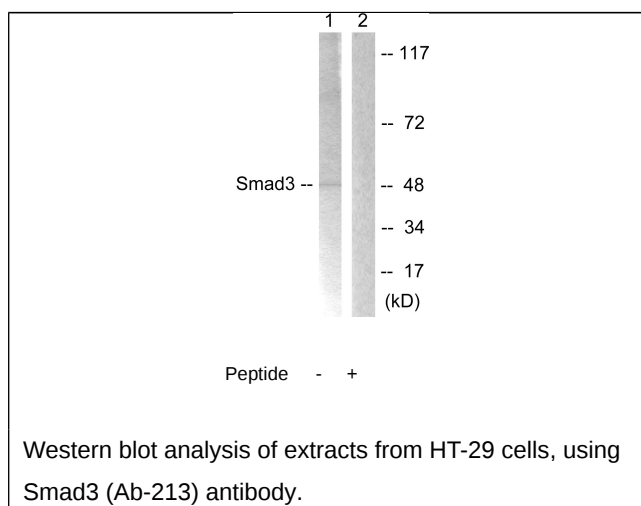
**Applications:** WB: 1:500~1:1000 ELISA: 1:1000

**References:**

Zhang Y., Nature 383:168-172(1996).

Melhuish T.A., J. Biol. Chem. 276:32109-32114(2001).

He W., Cell 125:929-941(2006).



**For Research Use Only**