



Smad1(Phospho-Ser187) Antibody

E11-0994A

Catalog Number: E11-0994A

Concentration: 1mg/ml

Swiss-Prot No.: Q15797

Other Names: BSP-1, BSP1, Dwarf1-A, Dwf-A, JV4-1, MADH1, MADR1, Mad-related protein 1, Mad1, Mothers against DPP homolog 1, Mothers against decapentaplegic homolog 1, Mothers-against-DPP-related-1, SMAD 1, Smad 1, Transforming growth factor- beta signaling protein-1

All Sites: Human: Ser187; Mouse: Ser187

Storage/Stability: Store at -20 °C/1 year

Form of Antibody: Rabbit IgG in phosphate buffered saline (without Mg²⁺ and Ca²⁺), pH 7.4, 150mM NaCl, 0.02% sodium azide and 50% glycerol.

Immunogen: The antiserum was produced against synthesized phosphopeptide derived from human Smad1 around the phosphorylation site of serine 187

(P-H-S^P-P-N, CPFPHS^PPNSS).

Purification: The antibody was affinity-purified from rabbit antiserum by affinity-chromatography using epitope-specific phosphopeptide. The antibody against non-phosphopeptide was removed by chromatography using non-phosphopeptide corresponding to the phosphorylation site.

Specificity: Smad1 (Phospho-Ser187) antibody detects endogenous levels of Smad1 only when phosphorylated at serine 187.

Reactivity: Human, Mouse

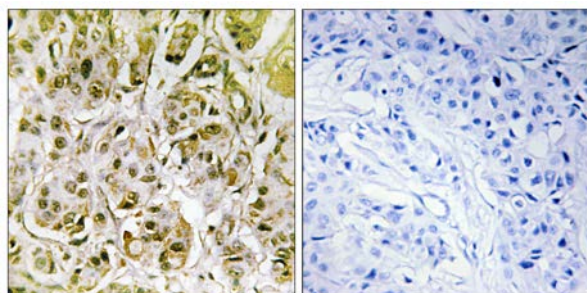
Applications: WB: 1:500~1:1000 IHC: 1:50~1:100
ELISA: 1:1000

References:

Riggins G.J., Nat. Genet. 13:347-349(1996).

Liu F., Nature 381:620-623(1996).

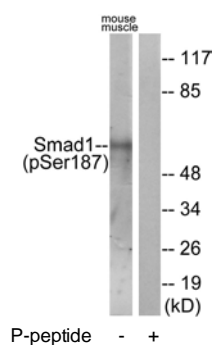
Hoodless P.A., Cell 85:489-500(1996).



P-peptide -

+

Immunohistochemistry analysis of paraffin-embedded human breast carcinoma tissue using Smad1 (Phospho-Ser187) antibody.



P-peptide -

+

Western blot analysis of extracts from mouse muscle cells, using Smad1 (Phospho-Ser187) antibody.

For Research Use Only