



## GATA2 (Phospho-Ser401) Antibody

E11-0932A

**Catalog Number:** E11-0932A

**Concentration:** 1mg/ml

**Swiss-Prot No.:** P23769

**Other Names:** Endothelial transcription factor GATA-2;  
GATA binding protein 2

**All Sites:** Human: Ser401; Mouse: Ser401

**Storage/Stability:** Store at -20 °C/1 year

**Form of Antibody:** Rabbit IgG in phosphate buffered saline (without Mg<sup>2+</sup> and Ca<sup>2+</sup>), pH 7.4, 150mM NaCl, 0.02% sodium azide and 50% glycerol.

**Immunogen:** The antiserum was produced against synthesized phosphopeptide derived from human GATA2 around the phosphorylation site of serine 401 (K-M-S<sup>P</sup>-N-K).

**Purification:** The antibody was affinity-purified from

rabbit antiserum by affinity-chromatography using epitope-specific phosphopeptide. The antibody against non-phosphopeptide was removed by chromatography using non-phosphopeptide corresponding to the phosphorylation site.

**Specificity:** GATA2 (Phospho-Ser401) antibody detects endogenous levels of GATA2 only when phosphorylated at serine 401.

**Reactivity:** Human, Mouse

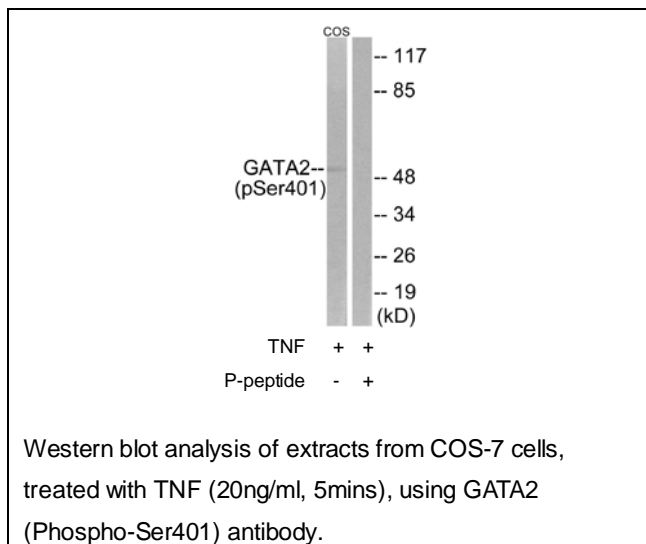
**Applications:** WB: 1:500~1:1000 ELISA: 1:1000

**References:**

Lee M.-E., J. Biol. Chem. 266:16188-16192(1991).

Dorfman D.M., J. Biol. Chem. 267:1279-1285(1992).

The MGC Project Team; Genome Res. 14:2121-2127(2004).



**For Research Use Only**