



CYSLTR2 Antibody

E11-075G**Catalog Number:** E11-075G**Concentration:** 1mg/ml, 100ug/100uL**Swiss-Prot No.:** Q9NS75**Other Names:** Cysteinyl leukotriene receptor 2; CysLTR2; HG57; HPN321; hGPCR21; CYSLTR2; CYSLT2, CYSLT2R; PSEC0146**Storage/Stability:** Store at -20 °C/1 year**Form of Antibody:** Rabbit IgG in phosphate buffered saline (without Mg²⁺ and Ca²⁺), pH 7.4, 150mM NaCl, 0.02% sodium azide and 50% glycerol.**Immunogen:** The antiserum was produced against synthesized peptide derived from internal of human CYSLTR2.**Purification:** The antibody was affinity-purified from

rabbit antiserum by affinity-chromatography using epitope-specific immunogen.

Specificity: CYSLTR2 antibody detects endogenous levels of total CYSLTR2 protein.**Reactivity:** Human**Applications:** WB: 1:500~1:1000 ELISA: 1:20000**References:**

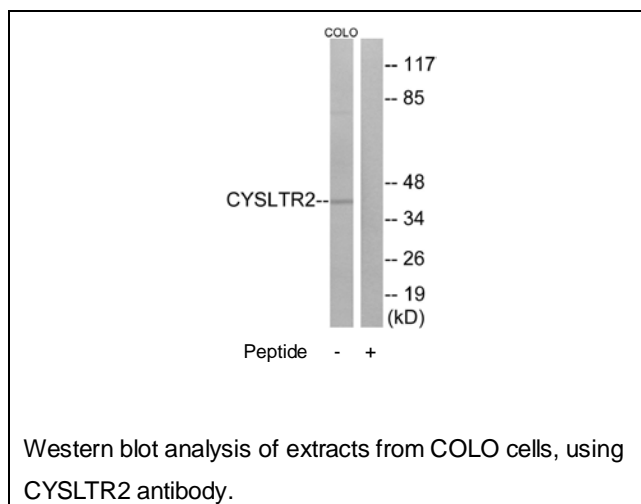
Takasaki J., Biochem. Biophys. Res. Commun. 274:316-322(2000).

Heise C.E.,

J. Biol. Chem. 275:30531-30536(2000).

Nothacker H.-P.,

Mol. Pharmacol. 58:1601-1608(2000).

**For Research Use Only**