



## Eif4g (Phospho-Ser1108) Antibody

E11-0642A

**Catalog Number:** E11-0642A

**Concentration:** 1mg/ml

**Swiss-Prot No.:** Q04637

**Other Names:** EIF4G1, EIF4GI, Eukaryotic translation initiation factor 4GI, IF4G1, eIF-4-gamma 1, eIF-4G, eIF-4G1, eukaryotic translation initiation factor 4 gamma 1, p220

**All Sites:** Human: Ser1108; Mouse: Ser1149; Rat: Ser950

**Storage/Stability:** Store at -20 °C/1 year

**Form of Antibody:** Rabbit IgG in phosphate buffered saline (without Mg<sup>2+</sup> and Ca<sup>2+</sup>), pH 7.4, 150mM NaCl, 0.02% sodium azide and 50% glycerol.

**Immunogen:** The antiserum was produced against synthesized phosphopeptide derived from human Eif4g around the phosphorylation site of serine 1108 (S-L-S<sup>P</sup>-R-E).

**Purification:** The antibody was affinity-purified from rabbit antiserum by affinity-chromatography using epitope-specific phosphopeptide. The antibody against non-phosphopeptide was removed by chromatography using non-phosphopeptide corresponding to the phosphorylation site.

**Specificity:** Eif4g (Phospho-Ser1108) antibody detects endogenous levels of Eif4g only when phosphorylated at serine 1108.

**Reactivity:** Human, Mouse, Rat

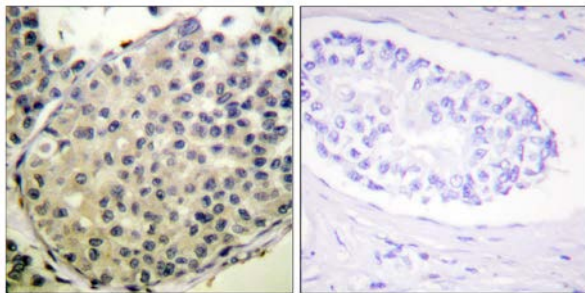
**Applications:** IHC: 1:50~1:100 ELISA: 1:40000

**References:**

Yan R., J. Biol. Chem. 267:23226-23231(1992).

Imataka H., Mol. Cell. Biol. 17:6940-6947(1997).

Byrd M.P., Mol. Cell. Biol. 22:4499-4511(2002).



P-peptide

-

+

Immunohistochemistry analysis of paraffin-embedded human breast carcinoma tissue using Eif4g (Phospho-Ser1108) antibody.

**For Research Use Only**