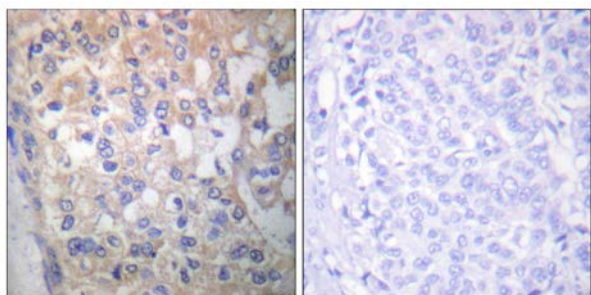




Fyn (Phospho-Tyr530) Antibody

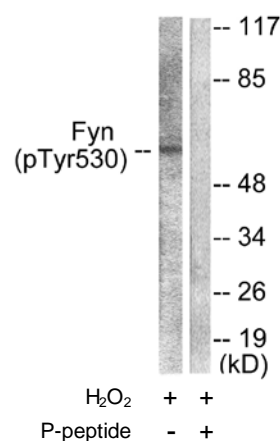
E11-0430A

- Catalog Number:** E11-0430A
- Amount:** 100µg/100µl
- Swiss-Prot No. :** P06241
- All Names:** EC 2.7.10.2, FYN, P59-FYN, SLK, SYN, kinase Fyn
- All Sites:** Human: Tyr530; Mouse: Tyr527
- Form of Antibody:** Rabbit IgG in phosphate buffered saline (without Mg²⁺ and Ca²⁺), pH 7.4, 150mM NaCl, 0.02% sodium azide and 50% glycerol.
- Storage/Stability:** Store at -20 °C/1 year
- Immunogen:** The antiserum was produced against synthesized phosphopeptide derived from human Fyn around the phosphorylation site of tyrosine 530 (P-Q-Y^P-Q-P).
- Purification:** The antibody was affinity-purified from rabbit antiserum by affinity-chromatography using epitope-specific phosphopeptide. The antibody against non-phosphopeptide was removed by chromatography using non-phosphopeptide corresponding to the phosphorylation site.
- Specificity/Sensitivity:** Fyn (Phospho-Tyr530) antibody detects endogenous levels of Fyn only when phosphorylated at tyrosine 530.
- Reactivity:** Human, Mouse
- Applications:** WB: 1:500~1:1000 IHC: 1:50~1:100
ELISA: 1:1000
- References:** Weijie Li, J. Biol. Chem., Jan 2007; 282: 1161 - 1169.
Xiaowu Li, J. Biol. Chem., Oct 2003; 278: 41646 - 41653.
Mamiko Maekawa, Biol Reprod, Jan 2002; 66: 211.
Jeannie Chin, J. Neurosci., Oct 2005; 25: 9694 - 9703.



P-peptide - +

Immunohistochemical analysis of paraffin-embedded human breast carcinoma tissue using Fyn (Phospho-Tyr530) antibody (#A0430).



Western blot analysis of extracts from 293 cells, treated with H₂O₂ (100uM, 15mins), using Fyn (Phospho-Tyr530) antibody (#A0430).

For Research Use Only