



## MMP1 (Cleaved-Phe100) Antibody

E11-0316L

**Catalog Number:** E11-0316L

**Concentration:** 1mg/ml, 100ug/100uL

**Swiss-Prot No.:** P03956

**Other Names:** Interstitial collagenase [Precursor]; EC 3.4.24.7; Matrix metalloproteinase-1; MMP-1; Fibroblast collagenase; 22 kDa interstitial collagenase; 27 kDa interstitial collagenase; MMP1; CLG

**Storage/Stability:** Store at -20 °C/1 year

**Form of Antibody:** Rabbit IgG in phosphate buffered saline (without Mg<sup>2+</sup> and Ca<sup>2+</sup>), pH 7.4, 150mM NaCl, 0.02% sodium azide and 50% glycerol.

**Immunogen:** The antiserum was produced against synthesized peptide derived from human MMP1.

**Purification:** The antibody was affinity-purified from rabbit antiserum by affinity-chromatography using epitope-specific immunogen.

**Specificity:** MMP1 (Cleaved-Phe100) antibody detects endogenous levels of fragment of activated MMP1 resulting from cleavage adjacent to Phe100.

**Reactivity:** Human

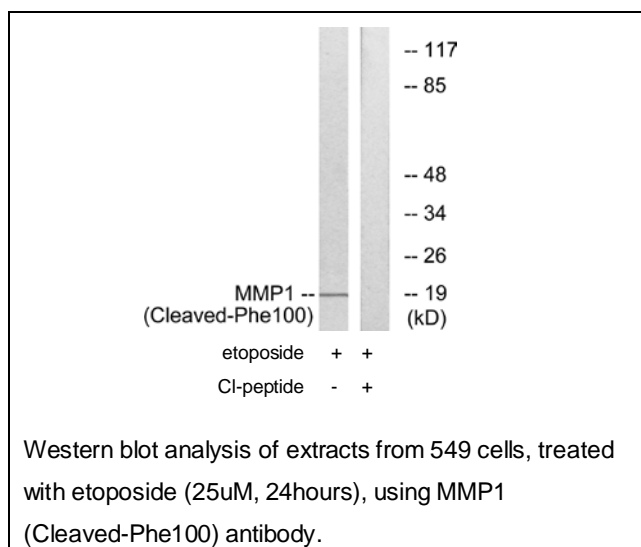
**Applications:** WB: 1:500~1:1000 ELISA: 1:10000

**References:**

Templeton N.S., Cancer Res. 50:5431-5437(1990).

Whitham S.E., Biochem. J. 240:913-916(1986).

Goldberg G.I., J. Biol. Chem. 261:6600-6605(1986).



**For Research Use Only**