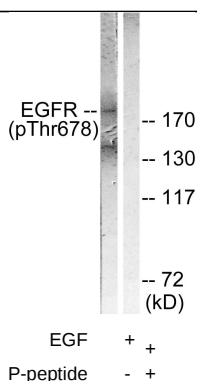
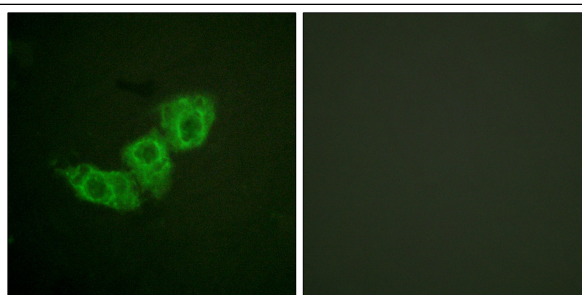


EnoGene EGFR (Phospho-Thr678) Antibody

- Catalog Number:** E11-0008A
- Amount:** 100µg/100µl
- Swiss-Prot No. :** P00533
- All Names:** EC 2.7.10.1, ERBB1, Epidermal growth factor receptor precursor, Receptor protein-tyrosine kinase ErbB-1, kinase EGFR
- All Sites:** Human: Thr678; Mouse: Thr680
- Form of Antibody:** Rabbit IgG in phosphate buffered saline (without Mg²⁺ and Ca²⁺), pH 7.4, 150mM NaCl, 0.02% sodium azide and 50% glycerol.
- Storage/Stability:** Store at -20°C/1 year
- Immunogen:** The antiserum was produced against synthesized phosphopeptide derived from human EGFR around the phosphorylation site of threonine 678 (K-R-T^P-L-R).
- Purification:** The antibody was affinity-purified from rabbit antiserum by affinity-chromatography using epitope-specific phosphopeptide. The antibody against non-phosphopeptide was removed by chromatography using non-phosphopeptide corresponding to the phosphorylation site.
- Specificity/Sensitivity:** EGFR (phospho-Thr678) antibody detects endogenous levels of EGFR only when phosphorylated at threonine 678.
- Reactivity:** Human, Mouse
- Applications:** WB: 1:300~1:1000 IF: 1:100~1:500
ELISA: 1:40000
- References:** Roland Reinehr, FASEB J, Feb 2003; 10: 1096.
Natsumi Yamamoto, J. Cell Sci., Nov 2006; 119: 4623 - 4633.
James G. Christensen Clin, Cancer Res., Dec 2001; 7: 4230.
Hideki Katayama, AACR Meeting Abstracts, Mar 2004; 2004: 1074.
Ali Tadlaoui Hbib, AACR Meeting Abstracts, Apr 2006; 2006: 1177
Komal Raina, AACR Meeting Abstracts, Apr 2006; 2006: 752 - 753.



Western blot analysis of extracts from cos7 cells treated with EGF (200ng/ml, 30mins), using EGFR (phospho-Thr678) antibody.



P-peptide	-	+
-----------	---	---

Immunofluorescence analysis of HuvEc cells, using EGFR (phospho-Thr678) antibody.

For Research Use Only

For Research Use Only