



MSI2 Mouse Monoclonal Antibody

E10-30178

Background: Msi2 (musashi homolog 2), also known as MSI2H, is a 328 amino acid protein that localizes to the cytoplasm and contains two RRM (RNA recognition motif) domains. Expressed ubiquitously at low levels, Msi2 functions as an RNA binding protein that, by regulating the expression of target mRNAs, is thought to play a role in the proliferation and maintenance of stem cells within the central nervous system. Msi2 is subject to posttranslational phosphorylation and is upregulated in response to brain injury, suggesting a role in healing and brain tissue regeneration. Chromosomal aberrations involving the Msi2 gene are associated with the progression of chronic myeloid leukemia. Multiple isoforms of Msi2 exist due to alternative splicing events. Tissue specificity: Ubiquitous; detected at low levels.

Catalog Number: E10-30178

Amount: 100µg/100µl

Clone Number: 2C11

Species: Mouse IgG1

MW: 35kDa

Aliases: MSI2H; MGC3245; FLJ36569; MSI2

Entrez Gene: 124540

Immunogen: Purified recombinant fragment of human MSI2 expressed in E. Coli.

Storage: Store at 4°C, for long term storage, store at -20°C.

Formulation: Ascitic fluid containing 0.03% sodium azide.

Species Reactivities: Human

Tested Applications: WB, IHC, ELISA. Not yet tested in other applications.

Application notes: WB: 1/500 - 1/2000, IHC: 1/200-1/1000, ELISA: Propose dilution 1/10000.

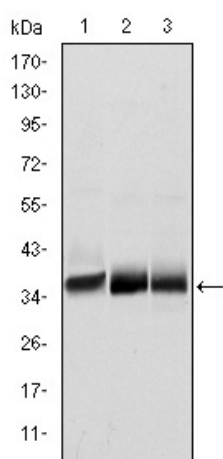


Figure 1: Western blot analysis using MSI2 mouse mAb against NTERA-2 (1), SW620 (2) and T47D (3) cell lysate.

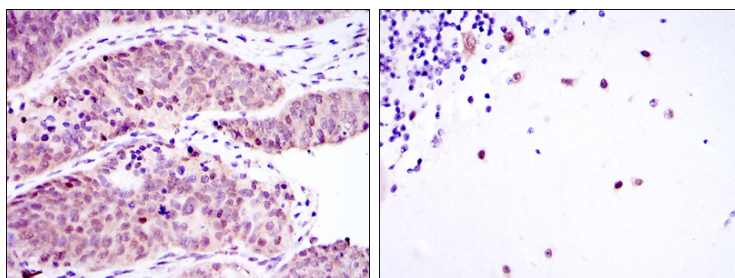
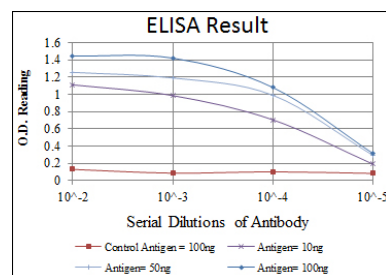


Figure 2: Immunohistochemical analysis of paraffin-embedded ovarian cancer (left) and cerebellum tissues (right) using MSI2 mouse mAb with DAB staining.



For Research Use Only