



## SETDB1 Mouse Monoclonal Antibody

E10-30132

- Background:** This gene encodes a histone methyltransferase. The encoded enzyme catalyzes the reaction of S-adenosyl-L-methionine and histone L-lysine to produce S-adenosyl-L-homocysteine and histone N(6)-methyl-L-lysine. The encoded protein likely functions in transcriptional repression. Alternatively spliced transcript variants have been described.
- Catalog Number:** E10-30132
- Amount:** 100µg/100µl
- Clone Number:** 5H6A12
- Species:** Mouse IgG1
- MW:** 180kDa
- Aliases:** ESET; KG1T; KMT1E; KIAA0067; H3-K9-HMTase4; SETDB1
- Entrez Gene:** 9869
- Immunogen:** Purified recombinant fragment of human SETDB1 expressed in E. Coli.
- Storage:** Store at 4°C, for long term storage, store at -20°C.
- Formulation:** Ascitic fluid containing 0.03% sodium azide.
- Species Reactivities:** Human; Mouse; Monkey
- Tested Applications:** WB, IF, ELISA. Not yet tested in other applications.
- Application notes:** WB: 1/500 - 1/2000, IF: 1/200 - 1/1000, ELISA: Propose dilution 1/10000.

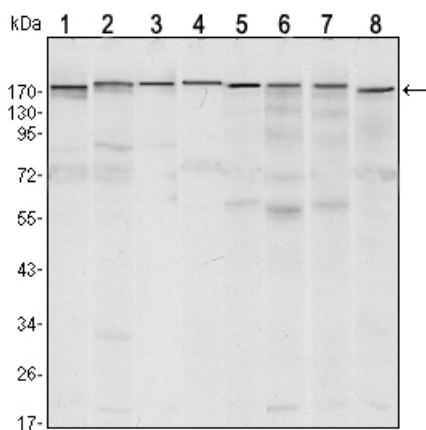


Figure 1: Western blot analysis using SETDB1 mouse mAb against MCF-7 (1), T47D (2), HEK293 (3), JURKAT (4), NIH/3T3 (5), F9 (6), RAW246.7 (7) and Cos7 (8) cell lysate.

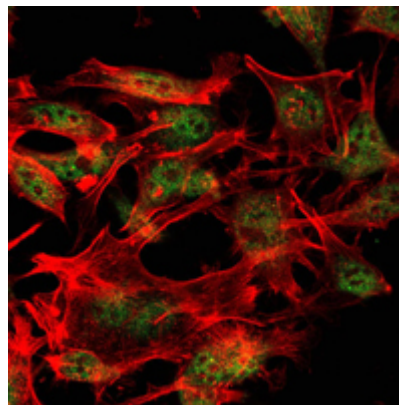


Figure 2: Immunofluorescence analysis of LOVO cells using SETDB1 mouse mAb (green). Red: Actin filaments have been labeled with Alexa Fluor-555 phalloidin.

**For Research Use Only**