



## CLOCK Mouse Monoclonal Antibody

E10-30034

- Background:** This gene encodes a protein that belongs to the basic helix-loop-helix (bHLH) family of transcription factors. Polymorphisms within the encoded protein have been associated with circadian rhythm sleep disorders. A similar protein in mice is a circadian regulator that acts as a transcription factor and forms a heterodimer with aryl hydrocarbon receptor nuclear translocator-like to activate transcription of mouse period 1.
- Catalog Number:** E10-30034
- Amount:** 100µg/100µl
- Clone Number:** 8F7
- Species:** Mouse IgG1
- MW** 95kDa
- Aliases:** KAT13D; bHLHe8; KIAA0334; CLOCK
- Entrez Gene:** 9575
- Immunogen:** Purified recombinant fragment of human CLOCK expressed in E. Coli.
- Storage:** Store at 4°C, for long term storage, store at -20°C.
- Formulation:** Ascitic fluid containing 0.03% sodium azide.
- Species Reactivities:** Human
- Tested Applications:** WB, IF, ELISA. Not yet tested in other applications.
- Application notes:** WB: 1/500 - 1/2000, IF: 1/200-1/1000, ELISA: Propose dilution 1/10000.

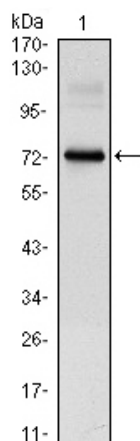


Figure 1: Western blot analysis using CLOCK mouse mAb against CLOCK-hlgGfC transfected HEK293 cell lysate.

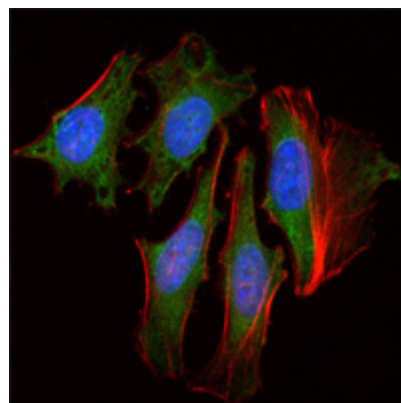


Figure 2: Immunofluorescence analysis of HeLa cells using CLOCK mouse mAb (green). Red: Actin filaments have been labeled with Alexa Fluor-555 phalloidin. Blue: DRAQ5 fluorescent DNA dye.

**For Research Use Only**