



KSHV ORF8 Mouse Monoclonal Antibody

E10-20043

Background: Kaposi's sarcoma-associated herpesvirus (KSHV) belongs to the gamma-(2)-herpesvirus subfamily and has been closely linked to the Kaposi's sarcoma, primary effusion lymphoma (PEL) and multicentric Castleman's disease. The genome of KSHV is 165-170 kb and contains at least 88 open reading frames. KSHV ORF8 is a virion envelope-associated protein. Akula et al (2003) report it acts as a Glycoprotein B mediated signaling during virus entry. This Glycoprotein possesses the Arg-Gly-Asp (RGD) motif and utilizes alpha3beta1 integrin as one of the receptors for its entry into the target cells.

Catalog Number: E10-20043

Amount: 100µg/100µl

Immunogen: Synthetic peptide, corresponding to amino acids sequence of KSHV ORF8.

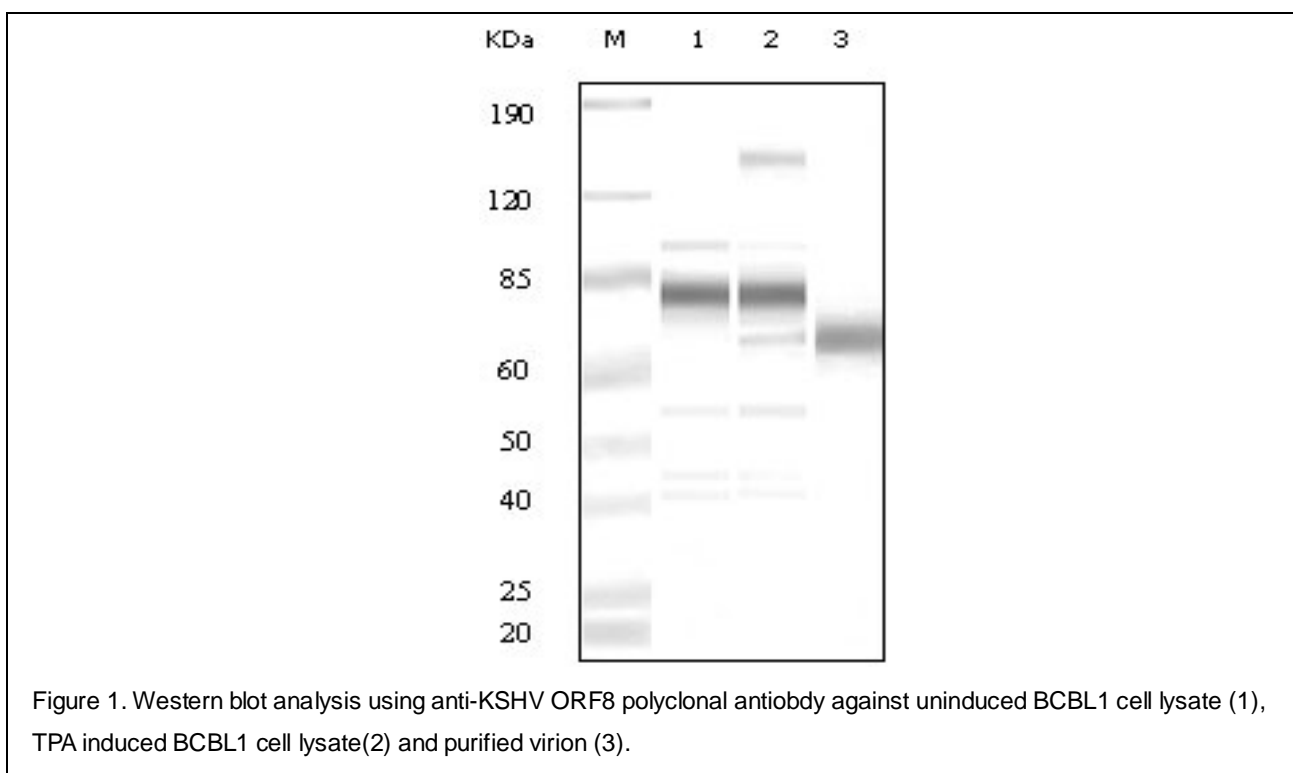
Storage: Store at 4°C, for long term storage, store at -20°C

Formulation: Rabbit anti-serum.

Species Reactivities: Human

Tested Applications: WB,ELISA. Not yet tested in other applications. Determining optimal working dilutions by titration test.

Application notes: WB. 1/500 - 1/2000 ELISA. Propose dilution 1/10000.



For Research Use Only