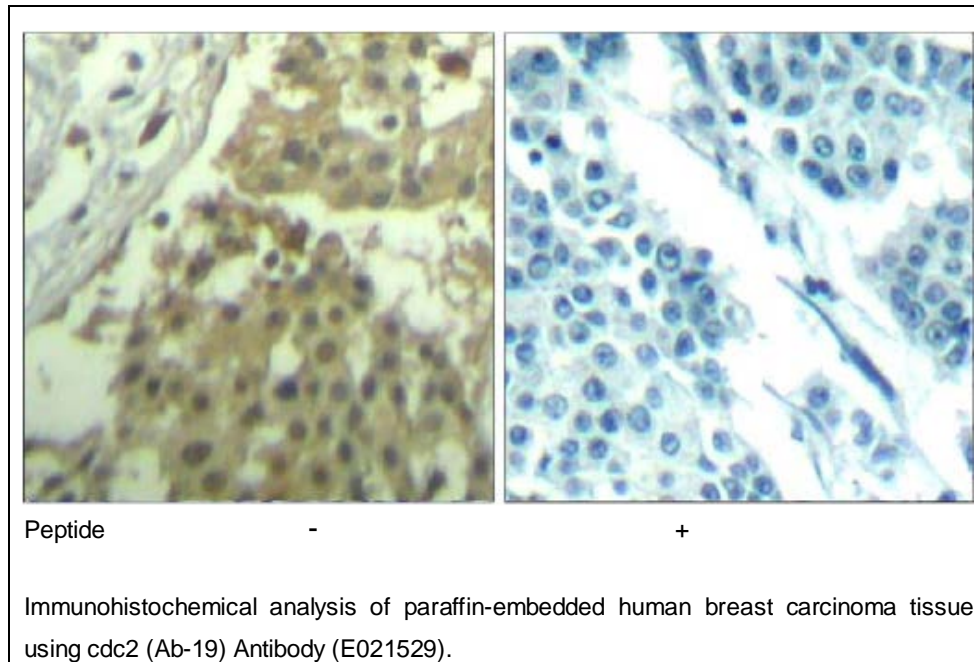




## cdc2 (Ab-19) Antibody

E021529

- Catalog Number:** E021529-1, E021529-2  
**Amount:** 50µg/50µl, 100µg/100µl  
**Swiss-Prot No. :** P06493  
**Form of Antibody:** Rabbit IgG in phosphate buffered saline (without Mg<sup>2+</sup> and Ca<sup>2+</sup>), pH 7.4, 150mM NaCl, 0.02% sodium azide and 50% glycerol.  
**Storage/Stability:** Store at -20°C/1 year  
**Immunogen:** The antiserum was produced against synthesized non-phosphopeptide derived from human cdc2 around the phosphorylation site of tyrosine 19 (V-V-Y<sup>P</sup>-K-G).  
**Purification:** The antibody was affinity-purified from rabbit antiserum by affinity-chromatography using epitope-specific immunogen.  
**Specificity/Sensitivity:** cdc2 (Ab-19) Antibody detects endogenous levels of total cdc2 protein.
- Reactivity:** Human, Rat  
**Applications:** IHC: 1:50~1:100  
**References:** Hunter, T. (1995) *Cell* 80, 225-236.  
Wells, N.J. et al. (1999) *J. Cell. Sci.* 112, 3361-3371.  
McGowan, C.H. and Russell, P. (1993) *EMBO J.* 12, 75-85.



**For Research Use Only**