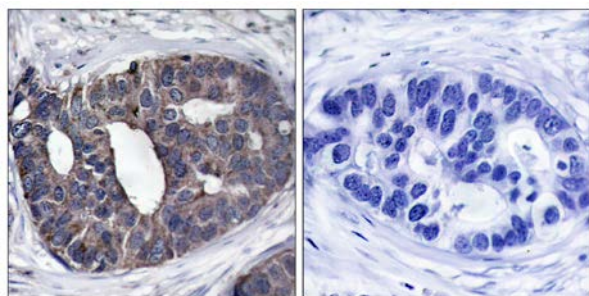




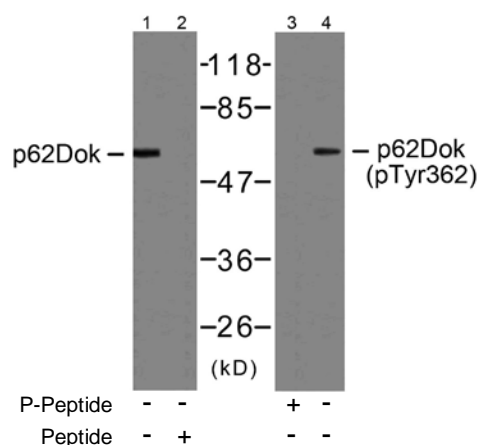
## p62Dok (Ab-362) Antibody

E021268

- Catalog Number:** E021268-1, E021268-2  
**Amount:** 50µg/50µl, 100µg/100µl  
**Swiss-Prot No. :** Q99704  
**Form of Antibody:** Rabbit IgG in phosphate buffered saline (without Mg<sup>2+</sup> and Ca<sup>2+</sup>), pH 7.4, 150mM NaCl, 0.02% sodium azide and 50% glycerol.  
**Storage/Stability:** Store at -20°C/1 year  
**Immunogen:** The antiserum was produced against synthesized non-phosphopeptide derived from human p62Dok around the phosphorylation site of tyrosine 362 (P-I-Y<sup>P</sup>-D-E).  
**Purification:** The antibody was affinity-purified from rabbit antiserum by affinity-chromatography using epitope-specific immunogen.  
**Specificity/Sensitivity:** p62Dok (Ab-362) antibody detects endogenous levels of total p62Dok protein.  
**Reactivity:** Human, Mouse, Rat  
**Applications:** WB: 1:500~1:1000 IHC: 1:50~1:100  
**References:** Zhou Songyang, et.al. (2001) J. Biol. Chem ; 276: 2459 - 2465.  
 Jean-Guy Némorin, et.al.(2000) J. Biol. Chem ; 275: 14590.  
 Yuji Yamanashi, et.al.(2000) Genes & Dev ; 14: 11.  
 Ibuki Kato, et.al.(2002) J. Immunol ; 168: 629.



P-Peptide - +  
 Immunohistochemical analysis of paraffin-embedded human breast carcinoma tissue using p62Dok (Ab-362) antibody (E021268).



Western blot analysis of extracts from Jurkat cells, using p62Dok (Ab-362) antibody (E021268, Line 1 and 2) and p62Dok (phospho-Tyr362) antibody (E011276, Line 3 and 4).