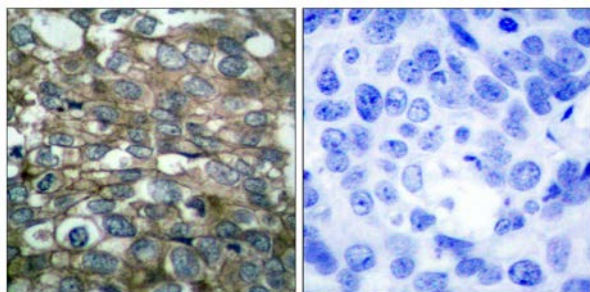




## EGFR (Ab-869) Antibody

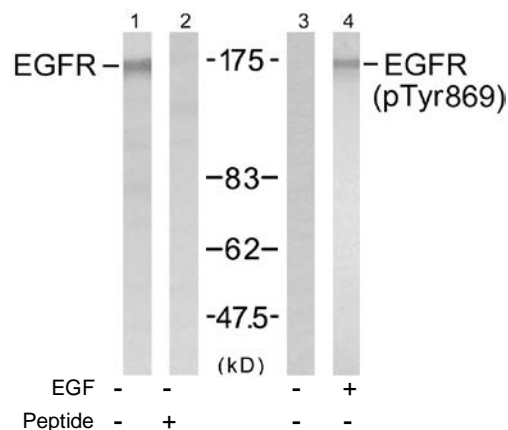
E021222

- Catalog Number:** E021222-1, E021222-2  
**Amount:** 50µg/50µl, 100µg/100µl  
**Swiss-Prot No. :** P00533  
**Form of Antibody:** Rabbit IgG in phosphate buffered saline (without Mg<sup>2+</sup> and Ca<sup>2+</sup>), pH 7.4, 150mM NaCl, 0.02% sodium azide and 50% glycerol.  
**Storage/Stability:** Store at -20°C/1 year  
**Immunogen:** The antiserum was produced against synthesized non-phosphopeptide derived from human EGFR around the phosphorylation site of tyrosine 869 (K-E-Y<sup>P</sup>-H-A).  
**Purification:** The antibody was affinity-purified from rabbit antiserum by affinity-chromatography using epitope-specific immunogen.  
**Specificity/Sensitivity:** EGFR (Ab-869) antibody detects endogenous levels of total EGFR protein.  
**Reactivity:** Human, Mouse, Rat  
**Applications:** WB: 1:500~1:1000 IHC: 1:50~1:100  
**References:** Gingras AC, et al. (1998) *Genes Dev* 12(4): 502-513.  
 Brugarolas J, et al. (2004) *Genes Dev* 18(23): 2893-2904.  
 Kumar V, et al. (2000) *EMBO J* 19(5): 1087-1097.  
 Moody CA, et al. (2005) *J Virol* 79(9): 5499-5506.  
 Burnett PE, et al. (1998) *Proc Natl Acad Sci U S A* 95(4): 1432-1437.



Peptide - +

Immunohistochemical analysis of paraffin-embedded human breast carcinoma tissue using EGFR (Ab-869) antibody (E021222).



Western blot analysis of extract from A431 cells untreated or treated with EGF (200ng/ml, 5min), using EGFR (Ab-869) antibody (E021222, Lane1 and 2) and EGFR (Phospho-Tyr869) antibody (E011229, Lane 3 and 4).

**For Research Use Only**