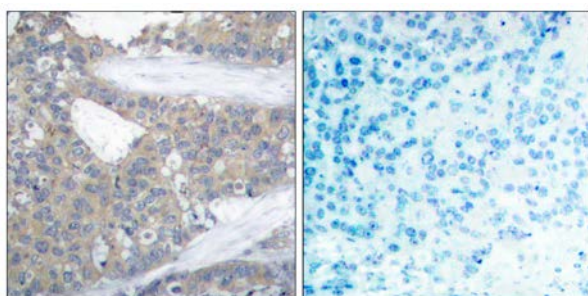




Paxillin (Ab-31) Antibody

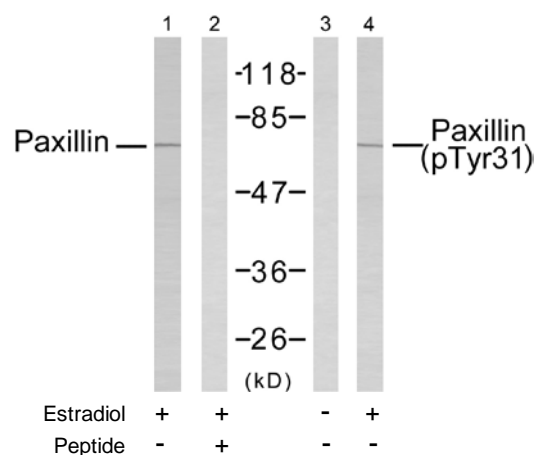
E021199

- Catalog Number:** E021199-1, E021199-2
Amount: 50µg/50µl, 100µg/100µl
Swiss-Prot No. : P49023
All Names: PAX-1, PXN, Paired box protein Pax-1, paxillin, paxillin alpha
All Sites: Human: Tyr31
Form of Antibody: Rabbit IgG in phosphate buffered saline (without Mg²⁺ and Ca²⁺), pH 7.4, 150mM NaCl, 0.02% sodium azide and 50% glycerol.
Storage/Stability: Store at -20°C/1 year
Immunogen: The antiserum was produced against synthesized non-phosphopeptide derived from human Paxillin around the phosphorylation site of tyrosine 31(T-P-Y^P-S-Y).
Purification: The antibody was affinity-purified from rabbit antiserum by affinity-chromatography using epitope-specific immunogen.
Specificity/Sensitivity: Paxillin (Ab-31) antibody detects endogenous levels of total Paxillin protein.
Reactivity: Human
Applications: WB: 1:500~1:1000 IHC: 1:50~1:100
References: Davidson D, et al. (2001) EMBO J; 20(13): 3414-3426
 Kook S, et al. (2000) Mol Biol Cell; 11(3): 929-939
 Fleming I, et al. (1999) Proc Natl Acad Sci U S A; 96(3): 1123-1128
 Goldberg MB, et al. (2001) Microbiol Mol Biol Rev; 65(4): 595-626
 Thomas JT, et al. (1999) Proc Natl Acad Sci U S A; 96(15): 8449-8454



Peptide - +

Immunohistochemical analysis of paraffin-embedded human breast carcinoma tissue using Paxillin (Ab-31) antibody (E021199).



Western blot analysis of extracts from SK-OV3 cells untreated or estradiol-treated (0.1 µM, 20min), using Paxillin (Ab-31) antibody (E021199, Line 1 and 2) and Paxillin (phospho-Tyr31) antibody (E011201, Line 3 and 4).

For Research Use Only