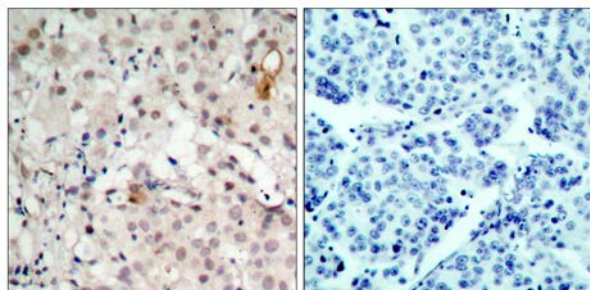
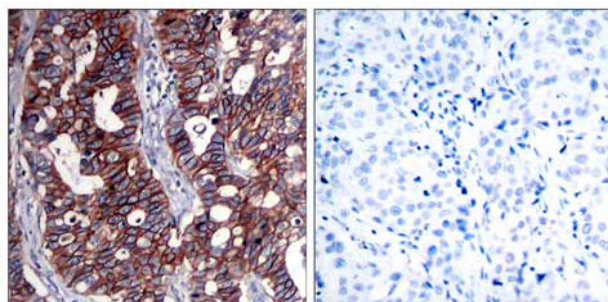




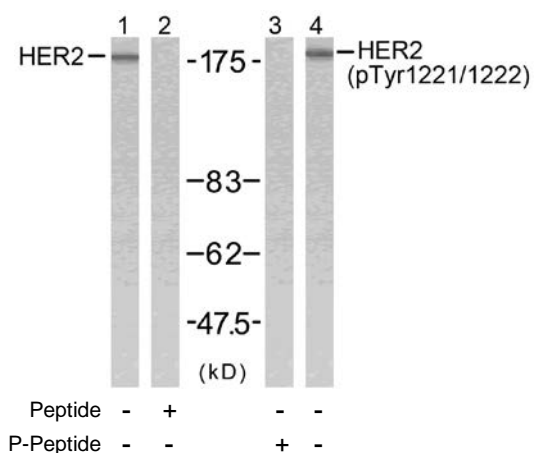
HER2 (Ab-1221/1222) Antibody

E021071

- Catalog Number:** E021071-1, E021071-2
- Amount:** 50µg/50µl, 100µg/100µl
- Form of Antibody:** Rabbit IgG in phosphate buffered saline (without Mg²⁺ and Ca²⁺), pH 7.4, 150mM NaCl, 0.02% sodium azide and 50% glycerol.
- Storage/Stability:** Store at -20°C/1 year
- Immunogen:** The antiserum was produced against synthesized non-phosphopeptide derived from human HER2 around the phosphorylation site of tyrosine 1221/1222 (N-L-Y^P-Y^P-W).
- Purification:** The antibody was affinity-purified from rabbit antiserum by affinity-chromatography using epitope-specific immunogen.
- Specificity/Sensitivity:** HER2 (Ab-1221/1222) antibody detects endogenous levels of total HER2 protein.
- Reactivity:** Human
- Applications:** WB: 1:500~1:1000 IHC: 1:50~1:100 IF:1:100~1:200
- Swiss-Prot No. :** P04626
- References:** Marone R, et al. (2004) Nat Cell Biol; 6(6): 515-22.
Ren Z, et al. (2002) J Biol Chem; 277(41): 38486-93.
Ouyang X, et al. (1998) Carcinogenesis; 19(11): 2013-9.
Ouyang X, et al. (1998) Exp Cell Res; 241(2): 467-75.
Klapper, L. N. et al. (2000) Cancer Res. 60, 3384-3388.



Peptide - +
 mmunohistochemical analysis of paraffin-embedded human breast carcinoma tissue using HER2 (Ab-1221/1222) antibody (E021071).



Western blot analysis of extracts from SK-OV3 cells using HER2 (Ab-1221/1222) antibody (E021071, Line 1 and 2) and HER2 (phospho-Tyr1221/Tyr1222) antibody (E011076, Line 3 and 4).

For Research Use Only