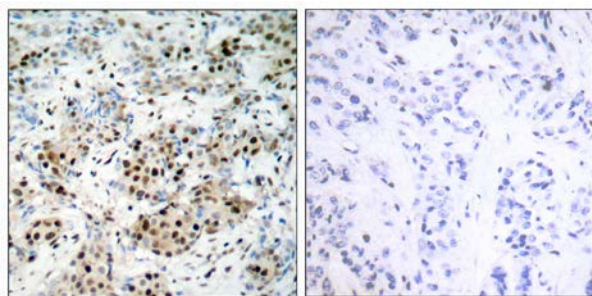




CREB (Ab-133) Antibody

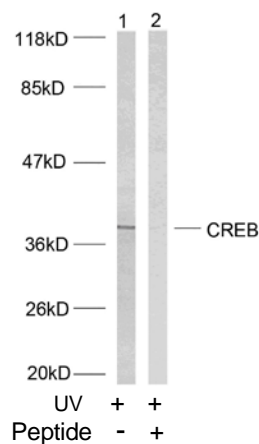
E021052

- Catalog Number:** E021052-1, E021052-2
Amount: 50µg/50µl, 100µg/100µl
Form of Antibody: Rabbit IgG in phosphate buffered saline (without Mg²⁺ and Ca²⁺), pH 7.4, 150mM NaCl, 0.02% sodium azide and 50% glycerol.
Storage/Stability: Store at -20°C/1 year
Immunogen: The antiserum was produced against synthesized non-phosphopeptide derived from human CREB around the phosphorylation site of serine 133 (R-P-S^P-Y-R).
Purification: The antibody was affinity-purified from rabbit antiserum by affinity-chromatography using epitope-specific immunogen.
Specificity/Sensitivity: CREB (Ab-133) antibody detects endogenous levels of total CREB protein.
Reactivity: Human, Mouse, Rat
Applications: WB: 1:500~1:1000 IHC: 1:50~1:100
Swiss-Prot No. : P16220
References: Xing J, et al. (1998) Mol Cell Biol 18(4): 1946-55.
 Tan Y, et al. (1996) EMBO J; 15(17): 4629-42.
 Hao, M. et al. (1996) J. Biol. Chem. 271, 29380-29385.
 Mayo LD, et al. (2001) Biol Chem; 276(27): 25184-9.
 Lu, H. et al. (1997) Mol. Cell. Biol. 17, 5923-5934.



Peptide - +

Immunohistochemical analysis of paraffin-embedded human breast carcinoma tissue using CREB (Ab-133) antibody (E021052).



Western blot analysis of extracts from HeLa cells using CREB (Ab-133) antibody (E021052).

For Research Use Only