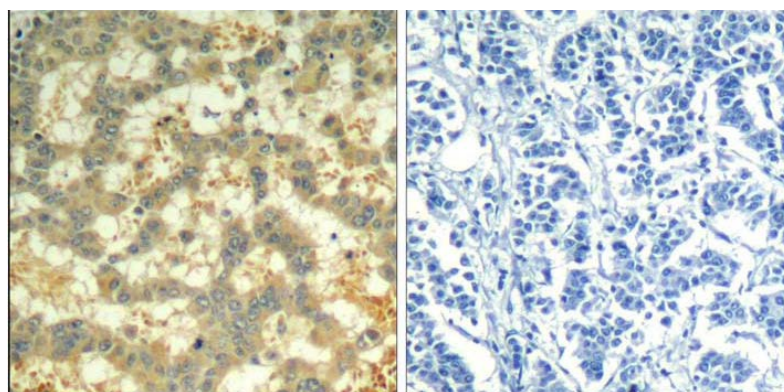




## Syk (phospho-Tyr323) Antibody

E011546

- Catalog Number:** E011546-1, E011546-2
- Amount:** 50µg/50µl, 100µg/100µl
- Form of Antibody:** Rabbit IgG in phosphate buffered saline (without Mg<sup>2+</sup> and Ca<sup>2+</sup>), pH 7.4, 150mM NaCl, 0.02% sodium azide and 50% glycerol.
- Storage/Stability:** Store at -20 °C
- Immunogen:** The antiserum was produced against synthesized phosphopeptide derived from human syk around the phosphorylation site of tyrosine 323 (N-P-Y<sup>P</sup>-E-P).
- Purification:** The antibody was affinity-purified from rabbit antiserum by affinity-chromatography using epitope-specific phosphopeptide. The antibody against non-phosphopeptide was removed by chromatography using non-phosphopeptide corresponding to the phosphorylation site.
- Specificity/Sensitivity:** syk (phospho-Tyr323) Antibody detects endogenous levels of syk only when phosphorylated at tyrosine 323.
- Reactivity:** Human
- Applications:** IHC: 1:50~100
- Swiss-Prot No. :** P43405
- References:** Zhang, J. et al. (2000) *J. Biol. Chem.* 275, 35442-35447.  
Turner, M. et al. (2000) *Immunol. Today* 21, 148-154.  
Decker, M. et al. (1998) *J. Biol. Chem.* 273, 8867-8874.  
Law, C.L. et al. (1996) *Mol. Cell. Biol.* 16, 1305-1315.



P-peptide -

+

Immunohistochemical analysis of paraffin-embedded human breast carcinoma tissue using syk (phospho-Tyr323) Antibody (E011546).

**For Research Use Only**