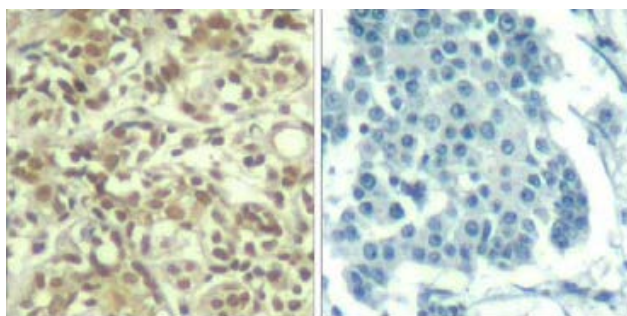




AKT1 (phospho-Thr450) Antibody

E011502

- Catalog Number:** E011502-1, E011502-2
- Amount:** 50µg/50µl, 100µg/100µl
- Form of Antibody:** Rabbit IgG in phosphate buffered saline (without Mg²⁺ and Ca²⁺), pH 7.4, 150mM NaCl, 0.02% sodium azide and 50% glycerol.
- Storage/Stability:** Store at -20°C/1 year
- Immunogen:** The antiserum was produced against synthesized phosphopeptide derived from human AKT1 around the phosphorylation site of threonine 450 (T-I-T^P-P-P).
- Purification:** The antibody was affinity-purified from rabbit antiserum by affinity-chromatography using epitope-specific phosphopeptide. The antibody against non-phosphopeptide was removed by chromatography using non-phosphopeptide corresponding to the phosphorylation site.
- Specificity/Sensitivity:** AKT1 (phospho-Thr450) Antibody detects endogenous levels of AKT1 only when phosphorylated at threonine 450.
- Reactivity:** Human, Mouse, Rat
- Applications:** IHC: 1:50~100 IF:1:100~1:200
- Swiss-Prot No. :** P31749
- References:** Franke, T.F. et al. (1997) *Cell* 88, 435-7.
Sarbassov, D.D. et al. (2005) *Science* 307, 1098-101.
Cantley, L.C. and Neel, B.G. (1999) *Proc Natl Acad Sci USA* 96, 4240-5.
Hajdуч, E. et al. (2001) *FEBS Lett* 492, 199-203.
Gesbert, F. et al. (2000) *J Biol Chem* 275, 39223-30.

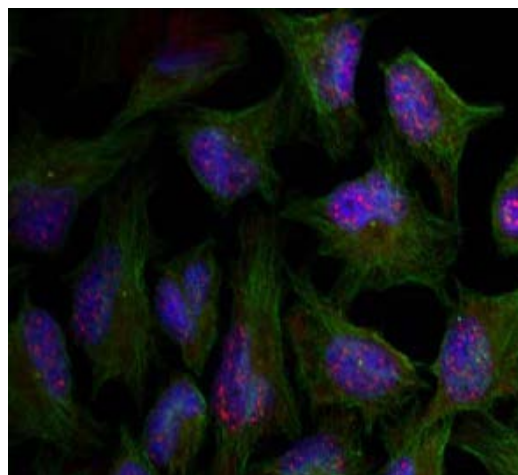


P-Peptide

-

+

Immunohistochemical analysis of paraffin-embedded human breast carcinoma tissue using AKT1 (phospho-Thr450) Antibody (E011502).



Immunofluorescence staining of methanol-fixed HeLa cells using AKT1 (phospho-Thr450) Antibody (E011502, red).

For Research Use Only