



RelB (Phospho-Ser552) Antibody

E011255

Catalog Number: E011255-1, E011255-2

Amount: 50µg/50µl, 100µg/100µl

Swiss-Prot No. : Q01201

Form of Antibody: Rabbit IgG in phosphate buffered saline (without Mg²⁺ and Ca²⁺), pH 7.4, 150mM NaCl, 0.02% sodium azide and 50% glycerol.

Storage/Stability: Store at -20°C/1 year

Immunogen: The antiserum was produced against synthesized phosphopeptide derived from human RelB around the phosphorylation site of serine 552 (L-L-S^P-P-G).

Purification: The antibody was affinity-purified from rabbit antiserum by affinity-chromatography using epitope-specific phosphopeptide. The antibody against non-phosphopeptide was removed by chromatography using non-phosphopeptide corresponding to the phosphorylation site.

Specificity/Sensitivity: RelB (phospho-Ser552) antibody detects endogenous levels of RelB only when phosphorylated at serine 552.

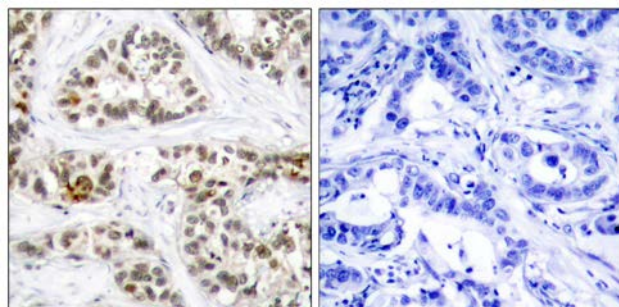
Reactivity: Human, Mouse, Rat

Applications: WB: 1:500~1:1000 IHC: 1:50-1:100

References: Marienfeld R, et al. (2001) *Oncogene*. 20 (56): 8142-7.

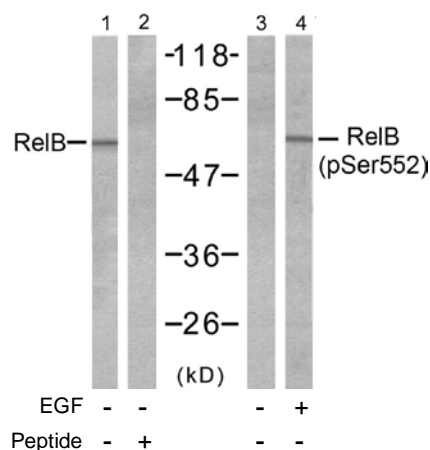
Charlotte S. Kaetzel1, et al. (2005) *Immunological Reviews* Volume 206: 83

Elwira Pyz, et al. (2006) *J Immunol*. 176:7447-55



P-Peptide - +

Immunohistochemical analysis of paraffin-embedded human breast carcinoma tissue using RelB (phospho-Ser552) antibody (E011255).



Western blot analysis of extracts from A431 cells, untreated or treated with EGF (200ng/ml 10min), using RelB (Ab-552) antibody (E021247, Line 1 and 2) and RelB (phospho-Ser552) antibody (E011255, Line 3 and 4).

For Research Use Only