



p44/42 MAP Kinase (Phospho-Tyr204) Antibody

E011246

Catalog Number: E011246-1, E011246-2

Amount: 50µg/50µl, 100µg/100µl

Swiss-Prot No.: P27361

Form of Antibody: Rabbit IgG in phosphate buffered saline (without Mg²⁺ and Ca²⁺), pH 7.4, 150mM NaCl, 0.02% sodium azide and 50% glycerol.

Storage/Stability: Store at -20°C/1 year

Immunogen: The antiserum was produced against synthesized phosphopeptide derived from human p44/42 MAP Kinase around the phosphorylation site of tyrosine 204 (T-E-Y^P-V-A).

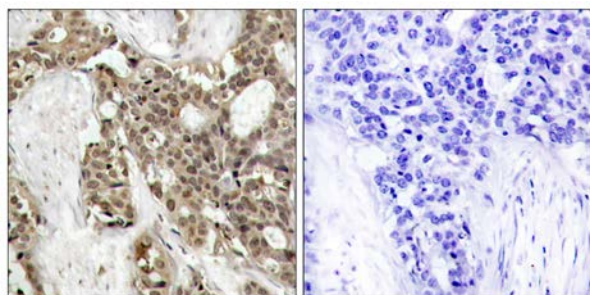
Purification: The antibody was affinity-purified from rabbit antiserum by affinity-chromatography using epitope-specific phosphopeptide. The antibody against non-phosphopeptide was removed by chromatography using non-phosphopeptide corresponding to the phosphorylation site.

Specificity/Sensitivity: p44/42 MAP Kinase (phospho-Tyr204) antibody detects endogenous levels of p44/42 MAP Kinase only when phosphorylated at tyrosine 204

Reactivity: Human, Mouse, Rat

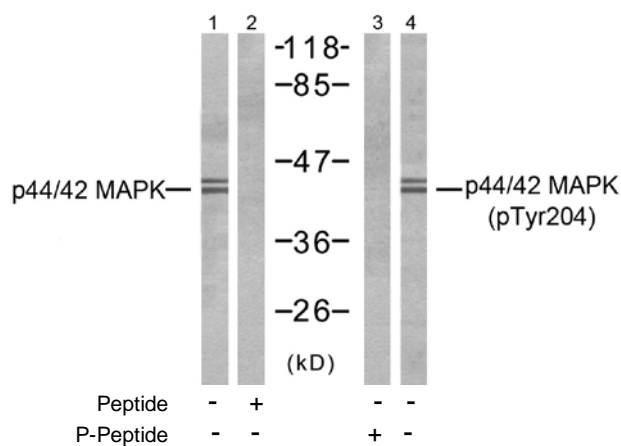
Applications: WB: 1:500~1:1000 IHC: 1:50~1:100 IF: 1:100-200

References: TETE HANNKEN, et al. (2000) Am Soc Nephrol 11:1387-1397
Omar D. PerezNature et al. (2002) Biotechnology 20: 155 - 162
Jingui Yu, et al. (2005) Anesth Analg 101: 315-321
Hironobu Ihn et al.(2000) Immunology 165: 2149-2155



P-Peptide - +

Immunohistochemical analysis of paraffin-embedded human breast carcinoma tissue, using p44/42 MAP Kinase (phospho-Tyr204) antibody (E011246).



Western blot analysis of extracts from NIH-3T3 cells, using p44/42 MAP Kinase (Ab-204) antibody (E021238, Line 1 and 2) and p44/42 MAP Kinase (phospho-Tyr204) antibody (E011246, Line 3 and 4).

For Research Use Only