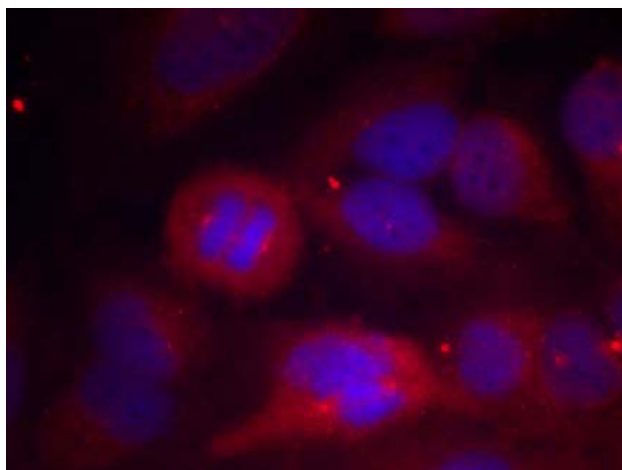




Tyrosine Hydroxylase (Phospho-Ser40) Antibody

E011212

- Catalog Number:** E011212-1, E011212-2
- Amount:** 50µg/50µl, 100µg/100µl
- Form of Antibody:** Rabbit IgG in phosphate buffered saline (without Mg²⁺ and Ca²⁺), pH 7.4, 150mM NaCl, 0.02% sodium azide and 50% glycerol.
- Storage/Stability:** Store at -20°C/1 year
- Immunogen:** The antiserum was produced against synthesized phosphopeptide derived from human Tyrosine Hydroxylase around the phosphorylation site of serine 40(R-Q-S^P-L-I).
- Purification:** The antibody was affinity-purified from rabbit antiserum by affinity-chromatography using epitope-specific phosphopeptide. The antibody against non-phosphopeptide was removed by chromatography using non-phosphopeptide corresponding to the phosphorylation site.
- Specificity/Sensitivity:** Tyrosine Hydroxylase (Phospho-Ser40) Antibody detects endogenous levels of Tyrosine Hydroxylase only when phosphorylated at serine 40.
- Reactivity:** Human, Mouse, Rat
- Applications:** IF:1:100~1:200
- Swiss-Prot No. :** P07101
- References:** Vazin T, et al. Stem Cells. 2008 Jun;26(6):1517-25
Pistocchi A, et al. BMC Dev Biol. 2008 Mar 10;8:27
Fukakusa A, et al. J Pharmacol Sci. 2008 Feb;106(2):321-4.



Immunofluorescence staining of methanol-fixed HeLa cells using Tyrosine Hydroxylase (Phospho-Ser40) Antibody (E011212, Red).

For Research Use Only