



## AFX (Phospho-Ser197) Antibody

E011137

**Catalog Number:** E011137-1, E011137-2

**Amount:** 50µg/50µl, 100µg/100µl

**Form of Antibody:** Rabbit IgG in phosphate buffered saline (without Mg<sup>2+</sup> and Ca<sup>2+</sup>), pH 7.4, 150mM NaCl, 0.02% sodium azide and 50% glycerol.

**Storage/Stability:** Store at -20°C/1 year

**Immunogen:** The antiserum was produced against synthesized phosphopeptide derived from human AFX around the phosphorylation site of serine 197 (A-A-S<sup>P</sup>-M-D).

**Purification:** The antibody was affinity-purified from rabbit antiserum by affinity-chromatography using epitope-specific phosphopeptide. The antibody against non-phosphopeptide was removed by chromatography using non-phosphopeptide corresponding to the phosphorylation site.

**Specificity/Sensitivity:** AFX (phospho-Ser197) antibody detects endogenous levels of AFX only when phosphorylated at serine 197.

**Reactivity:** Human, Mouse, Rat

**Applications:** WB: 1:500~1:1000 IHC: 1:50~1:100

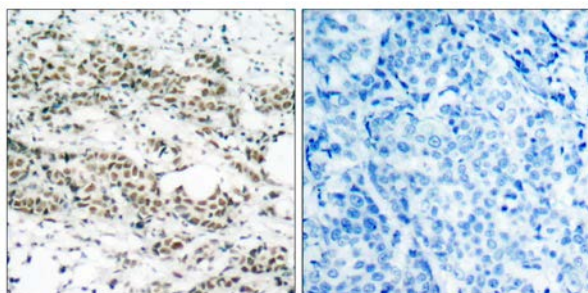
**Swiss-Prot No. :** P98177

**References:** Di Maira G, et al. (2005) Cell Death Differ; 12(6): 668-77.

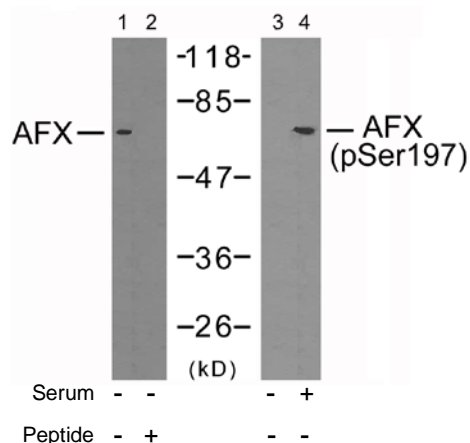
Essers MA, et al. EMBO J 2004 Nov. 11.

Brownawell AM, (2001) Mol Cell Biol; 21(10): 3534-46.

Kops GJ, et al. (1999) Nature; 398(6728): 630-4.



P-Peptide - +  
Immunohistochemical analysis of paraffin-embedded human breast carcinoma tissue using AFX (phospho-Ser197) antibody (E011137).



Western blot analysis of extracts from 293 cells using AFX (Ab-197) antibody (E021162, Lane 1 and 2) and AFX (phospho-Ser197) antibody (E011137, Lane 3 and 4).

**For Research Use Only**