



## Tau (Phospho-Ser404) Antibody

E011112

**Catalog Number:** E011112-1, E011112-2

**Amount:** 50µg/50µl, 100µg/100µl

**Form of Antibody:** Rabbit IgG in phosphate buffered saline (without Mg<sup>2+</sup> and Ca<sup>2+</sup>), pH 7.4, 150mM NaCl, 0.02% sodium azide and 50% glycerol.

**Storage/Stability:** Store at -20°C/1 year

**Immunogen:** The antiserum was produced against synthesized phosphopeptide derived from human Tau around the phosphorylation site of serine 404 (D-T-S<sup>P</sup>-P-R).

**Purification:** The antibody was affinity-purified from rabbit antiserum by affinity-chromatography using epitope-specific phosphopeptide. The antibody against non-phosphopeptide was removed by chromatography using non-phosphopeptide corresponding to the phosphorylation site.

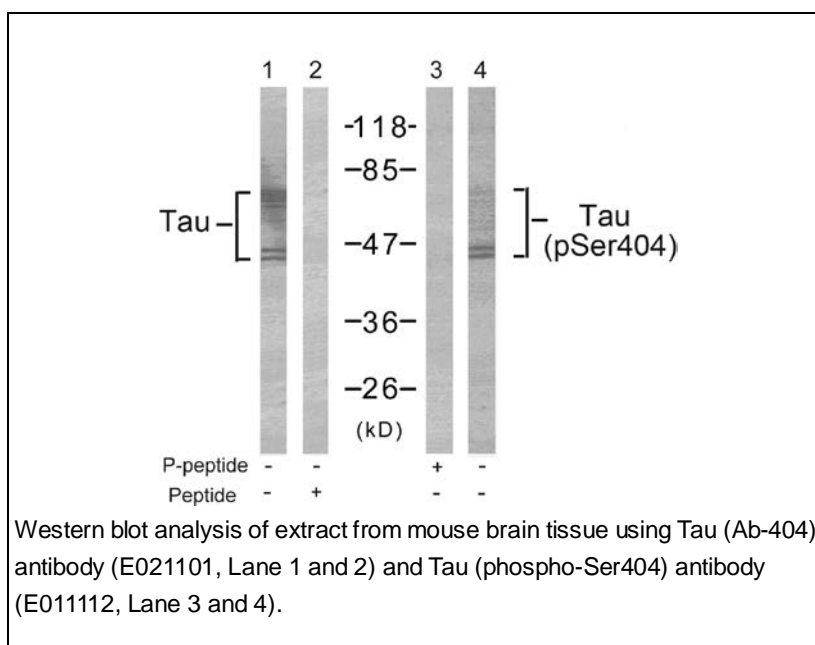
**Specificity/Sensitivity:** Tau (phospho-Ser404) antibody detects endogenous levels of Tau only when phosphorylated at serine404.

**Reactivity:** Human, Mouse, Rat

**Applications:** WB: 1:500~1:1000

**Swiss-Prot No. :** P10636

**References:** Li G, Yin H, et al. (2004) J Biol Chem ; 279(16): 15938-45.  
Noble W, et al. (2003) Neuron ; 38(4): 555-65.  
Giasson BI, et al.(2002).. Biochemistry; 41(51): 15376-87.  
Lee G., et.al. (1989). Neuron 2:1615-1624.  
Andreadis A.,et.al. (1992) Biochemistry 31:10626-10633.



**For Research Use Only**