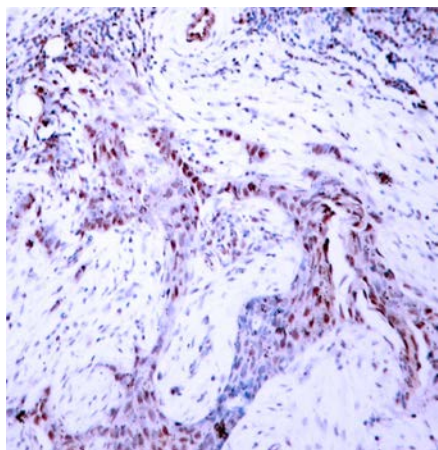




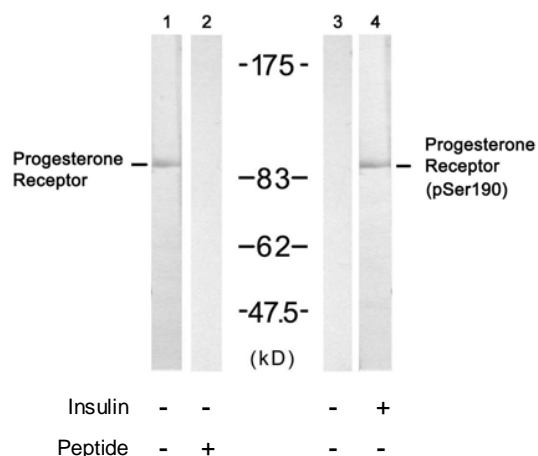
## Progesterone Receptor (Phospho-Ser190) Antibody

E011074

- Catalog Number:** E011074-1, E011074-2
- Amount:** 50µg/50µl, 100µg/100µl
- Form of Antibody:** Rabbit IgG in phosphate buffered saline (without Mg<sup>2+</sup> and Ca<sup>2+</sup>), pH 7.4, 150mM NaCl, 0.02% sodium azide and 50% glycerol.
- Storage/Stability:** Store at -20°C/1 year
- Immunogen:** The antiserum was produced against synthesized phosphopeptide derived from human Progesterone Receptor around the phosphorylation site of serine 190 (G-L-S<sup>P</sup>-P-A).
- Purification:** The antibody was affinity-purified from rabbit antiserum by affinity-chromatography using epitope-specific phosphopeptide. The antibody against non-phosphopeptide was removed by chromatography using non-phosphopeptide corresponding to the phosphorylation site.
- Specificity/Sensitivity:** Progesterone Receptor (phospho-Ser190) antibody detects endogenous levels of Progesterone Receptor only when phosphorylated at serine 190.
- Reactivity:** Human
- Applications:** WB: 1:500~1:1000 IHC: 1:50~1:100 IF:1:100~1:200
- Swiss-Prot No. :** P06401
- References:** Narayanan R, et al. (2005) Mol Cell Biol; 25(8): 2885-98.  
Knotts TA, et al. (2001) J Biol Chem; 276(11): 8475-83.  
Clemm DL, et al. (2000) Mol Endocrinol; 14(1): 52-65.  
Zhang Y, et al. (1997) Mol Endocrinol; 11(6): 823-32



Immunohistochemical analysis of paraffin- embedded human breast carcinoma tissue, using Progesterone Receptor (phospho-Ser190) antibody (E011074).



Western blot analysis of extract from SKOV3 cell untreated or treated with insulin, using Progesterone Receptor (Ab-190) antibody (E021069, Lane 1 and 2) and Progesterone Receptor (phospho-Ser190) antibody (E011074, Lane 3 and 4).

**For Research Use Only**