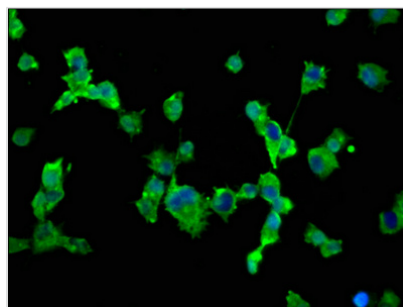




# SCN10A Antibody

<b>Product Code</b>	CSB-PA750910LA01HU
<b>Storage</b>	Upon receipt, store at -20°C or -80°C. Avoid repeated freeze.
<b>Uniprot No.</b>	Q9Y5Y9
<b>Immunogen</b>	Recombinant Human Sodium channel protein type 10 subunit alpha protein (992-1099AA)
<b>Raised In</b>	Rabbit
<b>Species Reactivity</b>	Human
<b>Tested Applications</b>	ELISA, IF; Recommended dilution: IF:1:50-1:200
<b>Form</b>	Liquid
<b>Conjugate</b>	Non-conjugated
<b>Storage Buffer</b>	Preservative: 0.03% Proclin 300 Constituents: 50% Glycerol, 0.01M PBS, pH 7.4
<b>Purification Method</b>	>95%, Protein G purified
<b>Isotype</b>	IgG
<b>Clonality</b>	Polyclonal
<b>Alias</b>	Sodium channel protein type 10 subunit alpha (Peripheral nerve sodium channel 3) (PN3) (hPN3) (Sodium channel protein type X subunit alpha) (Voltage-gated sodium channel subunit alpha Nav1.8), SCN10A
<b>Immunogen Species</b>	Homo sapiens (Human)
<b>Research Area</b>	Neuroscience
<b>Target Names</b>	SCN10A

## Image



Immunofluorescence staining of SH-SY5Y cells with CSB-PA750910LA01HU at 1:66, counter-stained with DAPI. The cells were fixed in 4% formaldehyde, permeabilized using 0.2% Triton X-100 and blocked in 10% normal Goat Serum. The cells were then incubated with the antibody overnight at 4°C. The secondary antibody was Alexa Fluor 488-conjugated AffiniPure Goat Anti-Rabbit IgG(H+L).