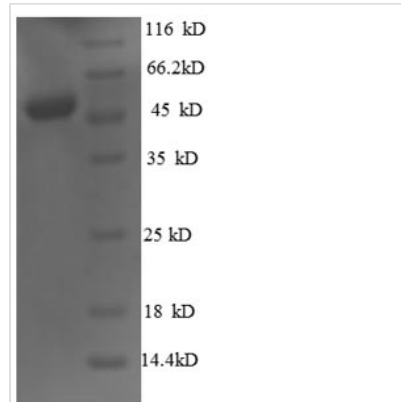




Recombinant Human Homeobox protein OTX2 (OTX2)

Product Code	CSB-EP017299HU
Relevance	Probably plays a role in the development of the brain and the sense organs. Can bind to the BCD target sequence (BTS): 5'-TCTAATCCC-3'.
Storage	The shelf life is related to many factors, storage state, buffer ingredients, storage temperature and the stability of the protein itself. Generally, the shelf life of liquid form is 6 months at -20°C/-80°C. The shelf life of lyophilized form is 12 months at -20°C/-80°C.
Uniprot No.	P32243
Alias	Orthodenticle homolog 2
Product Type	Recombinant Protein
Immunogen Species	Homo sapiens (Human)
Purity	Greater than 90% as determined by SDS-PAGE.
Sequence	MMSYLKQPPYAVNGLSLTTSGMDLLHPSVGYPGPWASCPAATPRKQRRERT TFTRAQLDVLEALFAKTRYPDIFMREEVALKINLPESRVQVWFKNRRRAKCRQQ QQQQQNGGQNKVRPAKKKTSPAREVSSSESGTSGQFTPPSSTSVPTIASSSAP VSIWSPASISPLSDPLSTSSSCMQRSYPMTYTQASGYSQGYAGSTSYFGGMD CGSYLTPMHHQLPGPGATLSPMGTNNAVTSHLNQSPASLSTQGYGASSLGFNS TTDCLDYKDQTASWKLNFNADCLDYKDQTSSWKQVVL
Lead Time	Delivery time may differ from different purchasing way or location, please kindly consult your local distributors for specific delivery time.
Research Area	Epigenetics and Nuclear Signaling
Source	E.coli
Gene Names	OTX2
Expression Region	1-297aa
Notes	Repeated freezing and thawing is not recommended. Store working aliquots at 4°C for up to one week.
Tag Info	N-terminal 6xHis-SUMO-tagged
Mol. Weight	48.4kDa
Protein Description	Full Length of Isoform 2
Image	



(Tris-Glycine gel) Discontinuous SDS-PAGE (reduced) with 5% enrichment gel and 15% separation gel.

Reconstitution

We recommend that this vial be briefly centrifuged prior to opening to bring the contents to the bottom. Please reconstitute protein in deionized sterile water to a concentration of 0.1-1.0 mg/mL. We recommend to add 5-50% of glycerol (final concentration) and aliquot for long-term storage at -20°C/-80°C. Our default final concentration of glycerol is 50%. Customers could use it as reference.