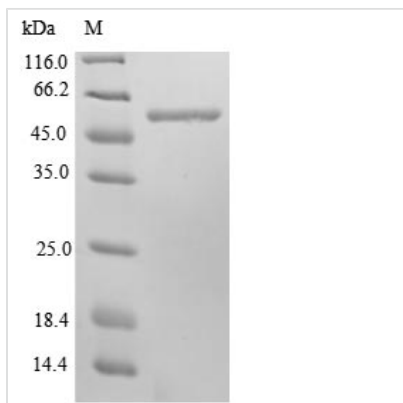




Recombinant Mouse Cytoskeleton-associated protein 4 (Ckap4), partial

Product Code	CSB-EP005453MO
Relevance	High-affinity epithelial cell surface receptor for APF. Mediates the anchoring of the endoplasmic reticulum to microtubules.
Abbreviation	Ckap4
Storage	The shelf life is related to many factors, storage state, buffer ingredients, storage temperature and the stability of the protein itself. Generally, the shelf life of liquid form is 6 months at -20°C/-80°C. The shelf life of lyophilized form is 12 months at -20°C/-80°C.
Uniprot No.	Q8BMK4
Product Type	Recombinant Protein
Immunogen Species	Mus musculus (Mouse)
Purity	Greater than 85% as determined by SDS-PAGE.
Sequence	VLEEVQQVRRGHQDFSRQRDELGQQLQGVEQKVQSLQATFGTFESLLRNSQ HKQDLTEKAVKEGESELNRISVQLQKLQNEILKDLSDGIHVVKDARERDFTSLE NTVEERLTELTKSINDNIAIFTDVQKRSQKEINEVKMKVASLEESKGDERSQDVK TLKDAVKEVQASMMSRERDIEALKSSLQTMESDVYTEVRELVSLKQEQQAFK QAADSERLALQALTEKLLRSEESSRRLPEDIRRLLEEELQQLKVGAGHSEEGAV FKDSKALEELQRQIEGLGARLQYVEDGVYSMQVASARHTESLESLLSKSQEYE QRLAMLQEHVGNLGSDDLASTVRSLSGETQLALSSDLKELKQSLGELPGTVES LQEQVLSLLSQDQAQAEGLPQDFLDRLSSLDNLKSSVSQVESDLKMLRTAVD SLVAYSVKIETNENNLESAGLLDDLRLDLRFLKVEKIHEKI
Lead Time	3-7 business days
Research Area	Cancer
Source	E.coli
Gene Names	Ckap4
Protein Names	63-kDa cytoskeleton-linking membrane protein Short name: Climp-63 Short name: p63
Expression Region	109-575aa
Notes	Repeated freezing and thawing is not recommended. Store working aliquots at 4°C for up to one week.
Tag Info	N-terminal 10xHis-tagged and C-terminal Myc-tagged
Mol. Weight	57.6 kDa
Protein Description	Partial
Image	



(Tris-Glycine gel) Discontinuous SDS-PAGE (reduced) with 5% enrichment gel and 15% separation gel.

Reconstitution

We recommend that this vial be briefly centrifuged prior to opening to bring the contents to the bottom. Please reconstitute protein in deionized sterile water to a concentration of 0.1-1.0 mg/mL. We recommend to add 5-50% of glycerol (final concentration) and aliquot for long-term storage at -20°C/-80°C. Our default final concentration of glycerol is 50%. Customers could use it as reference.