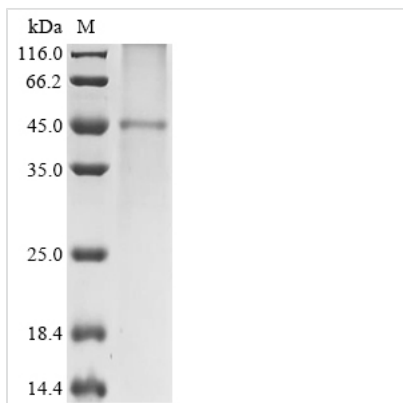




Recombinant Rat ATP-sensitive inward rectifier potassium channel 10 (Kcnj10)

Product Code	CSB-CF012048RA
Storage	The shelf life is related to many factors, storage state, buffer ingredients, storage temperature and the stability of the protein itself. Generally, the shelf life of liquid form is 6 months at -20°C/-80°C. The shelf life of lyophilized form is 12 months at -20°C/-80°C.
Uniprot No.	P49655
Form	Liquid or Lyophilized powder
Storage Buffer	If the delivery form is liquid, the default storage buffer is Tris/PBS-based buffer, 5%-50% glycerol. If the delivery form is lyophilized powder, the buffer before lyophilization is Tris/PBS-based buffer, 6% Trehalose.
Product Type	Recombinant Protein
Immunogen Species	Rattus norvegicus (Rat)
Purity	Greater than 85% as determined by SDS-PAGE.
Sequence	MTSVAKVYYSQTTQTESRPLVAPGIRRRRVLTKDGRSNVRMEHIADKRFLYLK DLWTTTFIDMQWRYKLLLSATFAGTWFLFGVVWYLVAVAHGDLELGPANH TPCVVQVHTLTGAFLESQTTIGYGFYISEECLAIVLLIAQLVLTILEIFITG TFLAKIARPKKRAETIRFSQHAVVAYHNGKLCMIRVANMRKSLIGCQVTGKLL QTHQTKEGENIRLNQVNVTFQVDTASDSPFLILPLTFYHVVDTSPLKDLPLRS GEGDFELVLILSGTVESTSATCQVRTSYLPEEILWGYEFTPAILSLASGKYVADF SLFDQVVKVASPGGLRDSTVRYGDPEKLEESLREQAEKEGSALSVRISNV
Lead Time	Delivery time may differ from different purchasing way or location, please kindly consult your local distributors for specific delivery time.
Research Area	Neuroscience
Source	in vitro E.coli expression system
Gene Names	Kcnj10
Expression Region	1-379aa
Notes	Repeated freezing and thawing is not recommended. Store working aliquots at 4°C for up to one week.
Tag Info	N-terminal 10xHis-tagged
Mol. Weight	48.5 kDa
Protein Description	Full Length
Image	



(Tris-Glycine gel) Discontinuous SDS-PAGE (reduced) with 5% enrichment gel and 15% separation gel.

Reconstitution

We recommend that this vial be briefly centrifuged prior to opening to bring the contents to the bottom. Please reconstitute protein in deionized sterile water to a concentration of 0.1-1.0 mg/mL. We recommend to add 5-50% of glycerol (final concentration) and aliquot for long-term storage at -20°/-80°. Our default final concentration of glycerol is 50%. Customers could use it as reference.