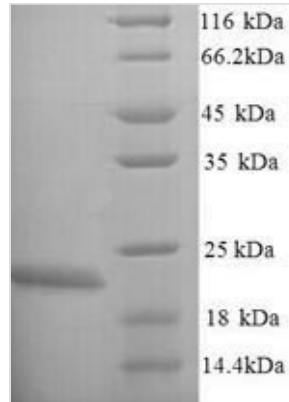




Recombinant Escherichia coli O6:H1 Lipopolysaccharide export system protein LptC(lptC)

Product Code	CSB-YP360015EGX
Relevance	Involved in the assembly of lipopolysaccharide (LPS). Required for the translocation of LPS from the inner membrane to the outer membrane. Facilitates the transfer of LPS from the inner membrane to the periplasmic protein LptA. Could be a docking site for LptA.
Storage	The shelf life is related to many factors, storage state, buffer ingredients, storage temperature and the stability of the protein itself. Generally, the shelf life of liquid form is 6 months at -20°C/-80°C. The shelf life of lyophilized form is 12 months at -20°C/-80°C.
Uniprot No.	P0ADW0
Storage Buffer	Tris-based buffer, 50% glycerol
Product Type	Recombinant Protein
Species	Escherichia coli O6:H1 (strain CFT073 / ATCC 700928 / UPEC)
Purity	Greater than 90% as determined by SDS-PAGE.
Sequence	MSKARRWVIVLSLAVLVMIGINMAEKDDTAQVVVNNNDPTYKSEHTDTLVYNP EGALSYRLIAQHVEYYSDQAVSWFTQPVLTTFDKDKIPTWSVKADKAKLTNDR MLYLYGHVEVNALVPDSQLRRITTDNAQINLVTQDVTSEDLVTLYGTTFNSSGL KMRGNLRSKNAELIEKVRTSYEIQNKQTQP
Research Area	Others
Source	Yeast
Gene Names	lptC
Protein Names	Recommended name: Lipopolysaccharide export system protein lptC
Expression Region	1-191aa
Notes	Repeated freezing and thawing is not recommended. Store working aliquots at 4°C for up to one week.
Tag Info	N-terminal 6xHis-tagged
Mol. Weight	23.7kDa
Protein Description	Full Length
Image	



(Tris-Glycine gel) Discontinuous SDS-PAGE (reduced) with 5% enrichment gel and 15% separation gel.