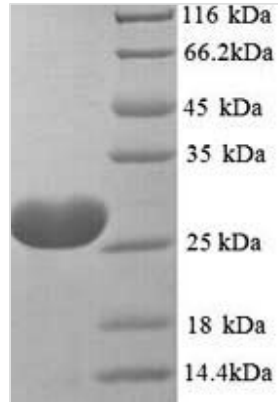




Recombinant Toxocara canis 26 kDa secreted antigen(TES-26)

Product Code	CSB-YP347478THA
Relevance	Binds phosphatidylethanolamine.
Storage	The shelf life is related to many factors, storage state, buffer ingredients, storage temperature and the stability of the protein itself. Generally, the shelf life of liquid form is 6 months at -20°C/-80°C. The shelf life of lyophilized form is 12 months at -20°C/-80°C.
Uniprot No.	P54190
Storage Buffer	Tris-based buffer,50% glycerol
Alias	Toxocara excretory-secretory antigen 26 ;TES-26
Product Type	Recombinant Protein
Species	Toxocara canis (Canine roundworm)
Purity	Greater than 90% as determined by SDS-PAGE.
Sequence	QCMDSASDCAANAGSCFTRPVSQVLQNRQCRTCNTCDCRDEANNCAASINL CQNPTFEPLVRDRCQKTCGLCAGCGFISSGIVPLVVTAPSRRVSVTFANNVQ VNCGNLTTAQVANQPTVTWEAQPNDRYTLIMVDPDFPSAANGQQGQRLHW WVINIPGNNIAGGTTLAAFQFPSTPAANTGVHRYVFLVYRQPAAINSPLLNNLVV QDSERPGFGTTAFATQFNLGSPYAGNFYRSQA
Lead Time	3-7 business days
Research Area	Others
Source	Yeast
Gene Names	TES-26
Protein Names	Recommended name: 26 kDa secreted antigen Alternative name(s): Toxocara excretory-secretory antigen 26 Short name= TES-26
Expression Region	22-262aa
Notes	Repeated freezing and thawing is not recommended. Store working aliquots at 4°C for up to one week.
Tag Info	N-terminal 6xHis-tagged
Mol. Weight	27.9kDa
Protein Description	Full Length of Mature Protein
Image	



(Tris-Glycine gel) Discontinuous SDS-PAGE (reduced) with 5% enrichment gel and 15% separation gel.