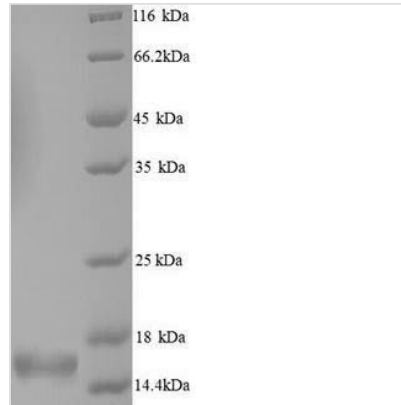




# Recombinant Human Alpha-synuclein protein(SNCA)

|                            |   |
|----------------------------|---|
| <b>Product Code</b>        | CSB-YP021912HU  |
| <b>Relevance</b>           | May be involved in the regulation of dopamine release and transport. Induces fibrillization of microtubule-associated protein tau. Reduces neuronal responsiveness to various apoptotic stimuli, leading to a decreased caspase-3 activation.                                   |
| <b>Storage</b>             | The shelf life is related to many factors, storage state, buffer ingredients, storage temperature and the stability of the protein itself. Generally, the shelf life of liquid form is 6 months at -20°C/-80°C. The shelf life of lyophilized form is 12 months at -20°C/-80°C. |
| <b>Uniprot No.</b>         | P37840  |
| <b>Storage Buffer</b>      | Tris-based buffer,50% glycerol  |
| <b>Alias</b>               | Non-A beta component of AD amyloidNon-A4 component of amyloid precursor ;NACP   |
| <b>Product Type</b>        | Recombinant Protein   |
| <b>Species</b>             | Homo sapiens (Human)  |
| <b>Purity</b>              | Greater than 90% as determined by SDS-PAGE.   |
| <b>Sequence</b>            | MDVFMKGLSKAKEGVVAAAEEKTKQGVAAEAAGKTKEGVLYVGSKTKEGVVHG<br>VATVAEKTKEQVTNVGGAVVTGVTAVAQKTVEGAGSIAAATGFVKKDQLGKN<br>EEGAPQEGILEDMPVDPDNEAYEMPSEEGYQDYPEA   |
| <b>Lead Time</b>           | 3-7 business days   |
| <b>Research Area</b>       | Neuroscience  |
| <b>Source</b>              | Yeast   |
| <b>Gene Names</b>          | SNCA  |
| <b>Protein Names</b>       | Recommended name: Alpha-synucleinAlternative name(s): Non-A beta component of AD amyloid Non-A4 component of amyloid precursor Short name= NACP   |
| <b>Expression Region</b>   | 1-140aa   |
| <b>Notes</b>               | Repeated freezing and thawing is not recommended. Store working aliquots at 4°C for up to one week.   |
| <b>Tag Info</b>            | N-terminal 6xHis-tagged   |
| <b>Mol. Weight</b>         | 16.5kDa   |
| <b>Protein Description</b> | Full Length   |

Image



(Tris-Glycine gel) Discontinuous SDS-PAGE (reduced) with 5% enrichment gel and 15% separation gel.