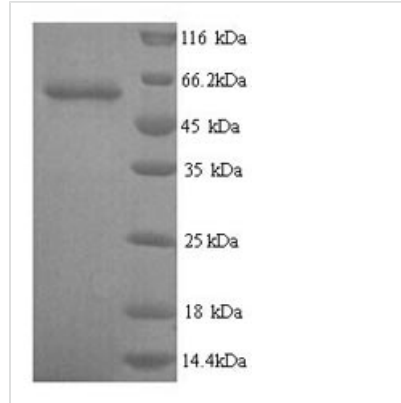




# Recombinant Human Glypican-6(GPC6)

<b>Product Code</b>	CSB-YP009708HU
<b>Relevance</b>	Cell surface proteoglycan that bears heparan sulfate. Putative cell surface coreceptor for growth factors, Extracellular domain matrix proteins, proteases and anti-proteases . Enhances migration and invasion of cancer cells through WNT5A signaling.1 Publication
<b>Storage</b>	The shelf life is related to many factors, storage state, buffer ingredients, storage temperature and the stability of the protein itself. Generally, the shelf life of liquid form is 6 months at -20°C/-80°C. The shelf life of lyophilized form is 12 months at -20°C/-80°C.
<b>Uniprot No.</b>	Q9Y625
<b>Storage Buffer</b>	Tris-based buffer,50% glycerol
<b>Product Type</b>	Recombinant Protein
<b>Species</b>	Homo sapiens (Human)
<b>Purity</b>	Greater than 90% as determined by SDS-PAGE.
<b>Sequence</b>	DVKARSCGEVRQAYGAKGFSLADIPYQEIAGEHLRICPQEYTCCTTEMEDKLS QQSKLEFENLVEETSHFVRTTFVSRHKKFDEFFRELLENAEKSLNDMFVRTYG MLYMQNSEVFQDLFTELKRYTGGNVNLEEMLNDFWARLLERMFQLINPQYH FSEDYLECVSKYTDQLKPFQDVPRKLIQVTRAFIAARTFVQGLTVGREVANRV SKVSPTPGCIRALMKMLYCPYCRGLPTVRPCNNYCLNVMKGCLANQADLDTE WNLFIDAMLLVAERLEGPFNIESVMDPIDVKISEAIMNMQENSMQVSAKVFQG CGQPKPAPALRSARSAPENFNTRFRPYNPEERPTTAAGTSLDRLVTDIKEKLNK LSKKVWSALPYTICKDESVTAGTSNEEECWNGHSHKARYLPEIMNDGLTNQINN PEVDVDITRPDTFIRQQIMALRVMTNKLKNAYNGNDVNFQDTSDESSGSGSGS GCMDDVCPTEFEFVTTEAPAVDPDRREVDS
<b>Research Area</b>	Signal Transduction
<b>Source</b>	Yeast
<b>Gene Names</b>	GPC6
<b>Expression Region</b>	24-529aa
<b>Notes</b>	Repeated freezing and thawing is not recommended. Store working aliquots at 4°C for up to one week.
<b>Tag Info</b>	N-terminal 6xHis-tagged
<b>Mol. Weight</b>	59.6kDa
<b>Protein Description</b>	Full Length of Mature Protein
<b>Image</b>	



(Tris-Glycine gel) Discontinuous SDS-PAGE (reduced) with 5% enrichment gel and 15% separation gel.