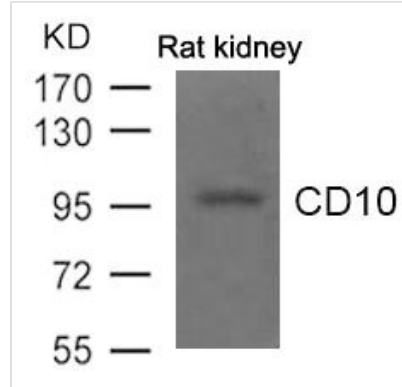




MME Antibody

Product Code	CSB-PA985136
Storage	Upon receipt, store at -20°C or -80°C. Avoid repeated freeze.
Uniprot No.	P08473
Immunogen	Peptide sequence around aa.6~10(S-Q-M-D-I) derived from Human CD10.
Raised In	Rabbit
Species Reactivity	Human,Mouse,Rat
Specificity	The antibody detects endogenous level of total CD10 protein.
Tested Applications	ELISA,WB;WB:1:500-1:1000
Relevance	<p>Thermolysin-like specificity, but is almost confined on acting on polypeptides of up to 30 amino acids. Biologically important in the destruction of opioid peptides such as Met- and Leu-enkephalins by cleavage of a Gly-Phe bond. Able to cleave angiotensin-1, angiotensin-2 and angiotensin 1-9. Involved in the degradation of atrial natriuretic factor (ANF). Displays UV-inducible elastase activity toward skin preelastic and elastic fibers.</p> <p>Yandle T.G., Brennan S.O., Espiner E.A., Nicholls M.G., Richards A.M. Peptides 10:891-894(1989) Rice G.I., Thomas D.A., Grant P.J., Turner A.J., Hooper N.M. Biochem. J. 383:45-51(2004) Morisaki N., Moriwaki S., Sugiyama-Nakagiri Y., Haketa K., Takema Y., Imokawa G.J. Biol. Chem. 285:39819-39827(2010)</p>
Form	Supplied at 1.0mg/mL in phosphate buffered saline (without Mg ²⁺ and Ca ²⁺), pH 7.4, 150mM NaCl, 0.02% sodium azide and 50% glycerol.
Purification Method	Antibodies were produced by immunizing rabbits with synthetic peptide and KLH conjugates. Antibodies were purified by affinity-chromatography using epitope-specific peptide.
Clonality	Polyclonal
Alias	NEP; MME; SFE; CALLA; MGC126681
Product Type	Polyclonal Antibody
Species	Homo sapiens (Human)
Target Names	MME
Image	



Western blot analysis of extract from Rat kidney tissue using CD10 Antibody