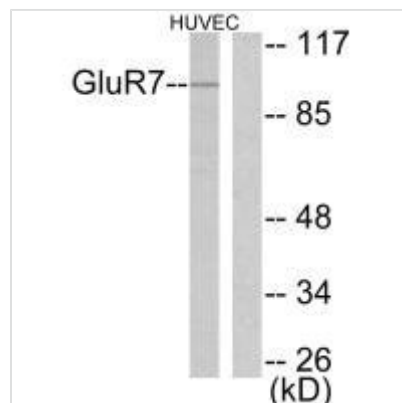




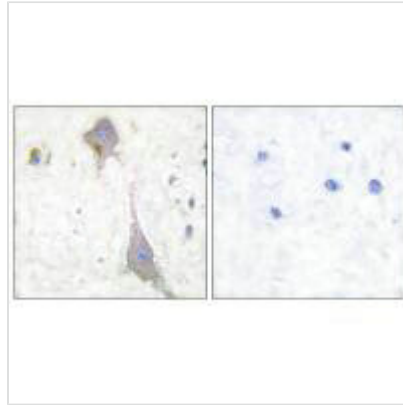
# GRM7 Antibody

<b>Product Code</b>	CSB-PA962170
<b>Storage</b>	Upon receipt, store at -20°C or -80°C. Avoid repeated freeze.
<b>Uniprot No.</b>	Q14831
<b>Immunogen</b>	Synthesized peptide derived from Human GluR7.
<b>Raised In</b>	Rabbit
<b>Species Reactivity</b>	Human, Mouse, Rat
<b>Specificity</b>	The antibody detects endogenous levels of total GluR7 protein.
<b>Tested Applications</b>	ELISA, WB, IHC; WB: 1:500-1:3000, IHC: 1:50-1:100
<b>Relevance</b>	<p>G-protein coupled receptor for glutamate. Ligand binding causes a conformation change that triggers signaling via guanine nucleotide-binding proteins (G proteins) and modulates the activity of down-stream effectors, such as adenylate cyclase. Signaling inhibits adenylate cyclase activity.</p> <p>Hans H. Schiffer, J. Neurosci., Dec 2000; 20: 9025.            Nathalie Strutz, J. Neurosci., Jan 2001; 21: 401.            Fr?ic Jaskolski, J. Biol. Chem., Jun 2005; 280: 22968 - 22976.            DE Hamassaki-Britto, J. Neurosci., May 1993; 13: 1888.</p>
<b>Form</b>	Rabbit IgG in phosphate buffered saline (without Mg <sup>2+</sup> and Ca <sup>2+</sup> ), pH 7.4, 150mM NaCl, 0.02% sodium azide and 50% glycerol.
<b>Purification Method</b>	The antibody was affinity-purified from rabbit antiserum by affinity-chromatography using epitope-specific immunogen.
<b>Clonality</b>	Polyclonal
<b>Alias</b>	EAA5; GLR7; GluR7a; dJ1090M5.1 (glutamate receptor; ionotropic
<b>Product Type</b>	Polyclonal Antibody
<b>Species</b>	Homo sapiens (Human)
<b>Target Names</b>	GRM7

## Image



Western blot analysis of extracts from HuvEc cells, using GluR7 antibody.



Immunohistochemical analysis of paraffin-embedded human brain tissue using GluR7 antibody.