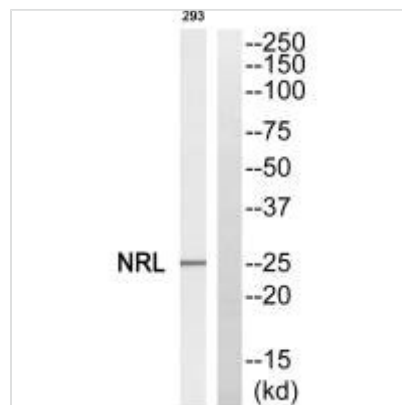




# NRL Antibody

<b>Product Code</b>	CSB-PA933723
<b>Storage</b>	Upon receipt, store at -20°C or -80°C. Avoid repeated freeze.
<b>Uniprot No.</b>	P54845
<b>Immunogen</b>	Synthesized peptide derived from N-terminal of Human NRL.
<b>Raised In</b>	Rabbit
<b>Species Reactivity</b>	Human
<b>Specificity</b>	The antibody detects endogenous levels of total NRL protein.
<b>Tested Applications</b>	ELISA, WB; WB: 1:500-1:3000
<b>Relevance</b>	Transcription factor which regulates the expression of several rod-specific genes, including RHO and PDE6B. By similarity.  Swaroop A., Proc. Natl. Acad. Sci. U.S.A. 89:266-270(1992). Farjo Q., Genomics 45:395-401(1997). Heilig R., Nature 421:601-607(2003)
<b>Form</b>	Rabbit IgG in phosphate buffered saline (without Mg <sup>2+</sup> and Ca <sup>2+</sup> ), pH 7.4, 150mM NaCl, 0.02% sodium azide and 50% glycerol.
<b>Purification Method</b>	The antibody was affinity-purified from rabbit antiserum by affinity-chromatography using epitope-specific immunogen.
<b>Clonality</b>	Polyclonal
<b>Alias</b>	Neural retina-specific leucine zipper protein; NRL; D14S46E;
<b>Product Type</b>	Polyclonal Antibody
<b>Species</b>	Homo sapiens (Human)
<b>Target Names</b>	NRL

## Image



Western blot analysis of extracts from 293 cells, using NRL antibody.