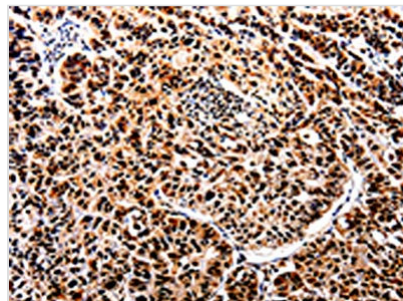




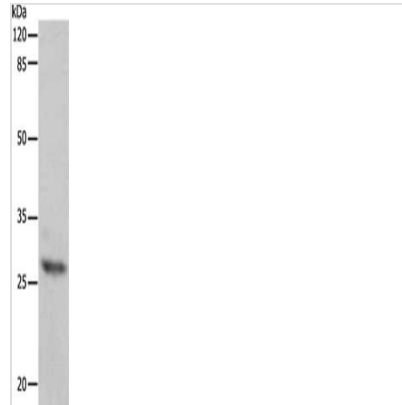
# APIP Antibody

<b>Product Code</b>	CSB-PA921015
<b>Storage</b>	Upon receipt, store at -20°C or -80°C. Avoid repeated freeze.
<b>Uniprot No.</b>	Q96GX9
<b>Immunogen</b>	Fusion protein of Human APIP
<b>Raised In</b>	Rabbit
<b>Species Reactivity</b>	Human,Mouse
<b>Tested Applications</b>	ELISA,WB,IHC;ELISA:1:500-1:5000,WB:1:200-1:1000,IHC:1:25-1:100
<b>Relevance</b>	APIP is an APAF1 (MIM 602233)-interacting protein that acts as a negative regulator of ischemic/hypoxic injury.The protein highly expressed in skeletal muscle and heart and binds to the CARD of Apaf-1 in competition with caspase-9. Exogenous APIP inhibits cytochrome c-induced activation of caspase-3 and caspase-9, and suppresses cell death triggered by mitochondrial apoptotic stimuli through inhibiting the downstream activity of cytochrome c released from mitochondria.
<b>Form</b>	Liquid
<b>Conjugate</b>	Non-conjugated
<b>Storage Buffer</b>	-20°C, pH7.4 PBS, 0.05% NaN3, 40% Glycerol
<b>Purification Method</b>	Antigen affinity purification
<b>Isotype</b>	IgG
<b>Alias</b>	APAF1 interacting protein
<b>Species</b>	Homo sapiens (Human)
<b>Target Names</b>	APIP

## Image



The image on the left is immunohistochemistry of paraffin-embedded Human lung cancer tissue using CSB-PA921015(APIP Antibody) at dilution 1/25, on the right is treated with fusion protein. (Original magnification: x200)



Gel: 10%SDS-PAGE, Lysate: 60  $\mu$ g, Lane:  
Mouse heart tissue, Primary antibody: CSB-  
PA921015(APIP Antibody) at dilution 1/300,  
Secondary antibody: Goat anti rabbit IgG at  
1/8000 dilution, Exposure time: 10 seconds