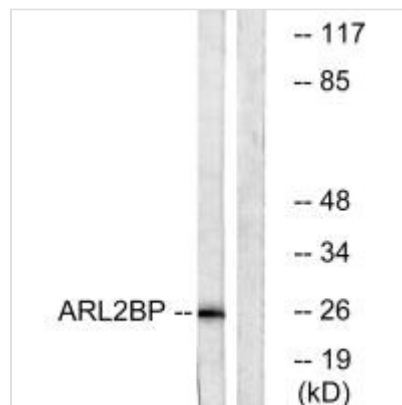




ARL2BP Antibody

| | |
|----------------------------|--|
| Product Code | CSB-PA918867 |
| Storage | Upon receipt, store at -20°C or -80°C. Avoid repeated freeze. |
| Uniprot No. | Q9Y2Y0 |
| Immunogen | Synthesized peptide derived from internal of Human ARL2BP. |
| Raised In | Rabbit |
| Species Reactivity | Human,Mouse,Rat |
| Specificity | The antibody detects endogenous levels of total ARL2BP protein |
| Tested Applications | ELISA,WB;WB:1:500-1:3000 |
| Relevance | Together with ARL2, plays a role in the nuclear translocation, retention and transcriptional activity of STAT3. May play a role as an effector of ARL2. Sharer J.D., J. Biol. Chem. 274:27553-27561(1999). The MGC Project Team; Genome Res. 14:2121-2127(2004). Van Valkenburgh H., J. Biol. Chem. 276:22826-22837(2001) |
| Form | Rabbit IgG in phosphate buffered saline (without Mg ²⁺ and Ca ²⁺), pH 7.4, 150mM NaCl, 0.02% sodium azide and 50% glycerol. |
| Purification Method | The antibody was affinity-purified from rabbit antiserum by affinity-chromatography using epitope-specific immunogen. |
| Clonality | Polyclonal |
| Alias | ADP-ribosylation factor-like 2 binding; AR2BP; Arf-like 2 binding protein BART1; ARL2BP; BART1 |
| Product Type | Polyclonal Antibody |
| Species | Homo sapiens (Human) |
| Target Names | ARL2BP |

Image



Western blot analysis of extracts from A549 cells, using ARL2BP antibody.