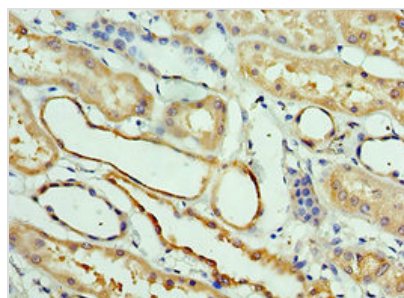


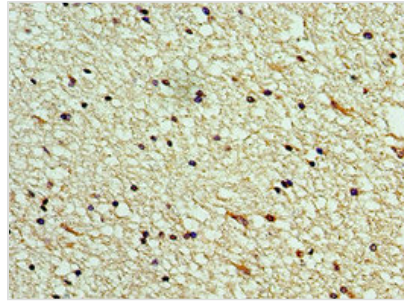


# CLEC11A Antibody

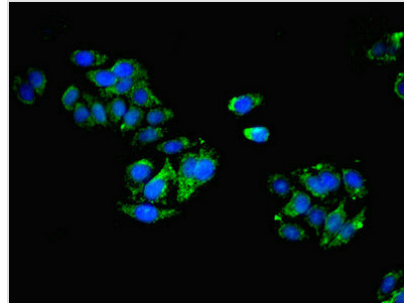
<b>Product Code</b>	CSB-PA896480ESR2HU
<b>Storage</b>	Upon receipt, store at -20°C or -80°C. Avoid repeated freeze.
<b>Uniprot No.</b>	Q9Y240
<b>Immunogen</b>	Recombinant Human C-type lectin domain family 11 member A protein (22-323AA)
<b>Raised In</b>	Rabbit
<b>Species Reactivity</b>	Human
<b>Tested Applications</b>	ELISA, IHC, IF; Recommended dilution: IHC:1:20-1:200, IF:1:50-1:200
<b>Relevance</b>	Stimulates the proliferation and differentiation of hematopoietic precursor cells from various lineages, including erythrocytes, lymphocytes, granulocytes and macrophages. Acts synergistically with other cytokines, including IL-3, GCSF, GMCSF and FLT3 ligand. Suppresses SCF-stimulated erythrocyte proliferation.
<b>Form</b>	Liquid
<b>Conjugate</b>	Non-conjugated
<b>Storage Buffer</b>	PBS with 0.02% sodium azide, 50% glycerol, pH7.3.
<b>Purification Method</b>	Antigen Affinity Purified
<b>Isotype</b>	IgG
<b>Clonality</b>	Polyclonal
<b>Alias</b>	C-type lectin domain family 11 member A (C-type lectin superfamily member 3) (Lymphocyte secreted C-type lectin) (Osteolectin) (Stem cell growth factor) (p47), CLEC11A, CLECSF3 LSLCL SCGF
<b>Species</b>	Human
<b>Research Area</b>	Immunology
<b>Target Names</b>	CLEC11A

**Image**


Immunohistochemistry of paraffin-embedded human kidney tissue using CSB-PA896480ESR2HU at dilution of 1:100



Immunohistochemistry of paraffin-embedded human brain tissue using CSB-PA896480ESR2HU at dilution of 1:100



Immunofluorescent analysis of HepG2 cells using CSB-PA896480ESR2HU at dilution of 1:100 and Alexa Fluor 488-conjugated AffiniPure Goat Anti-Rabbit IgG(H+L)